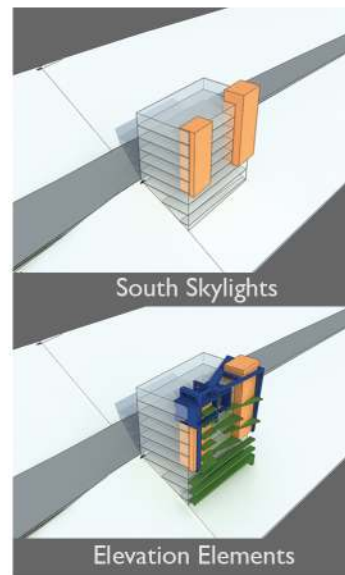


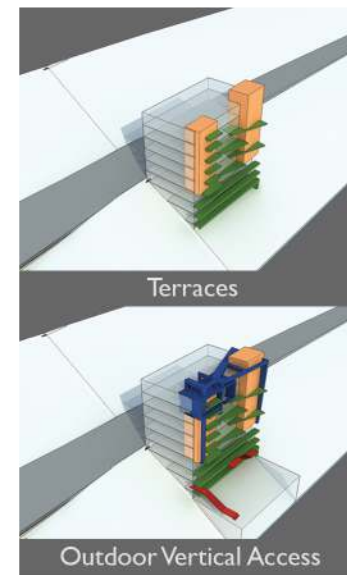


South View



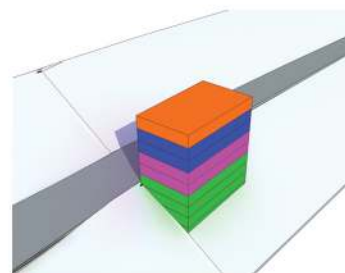
South Skylights

Elevation Elements

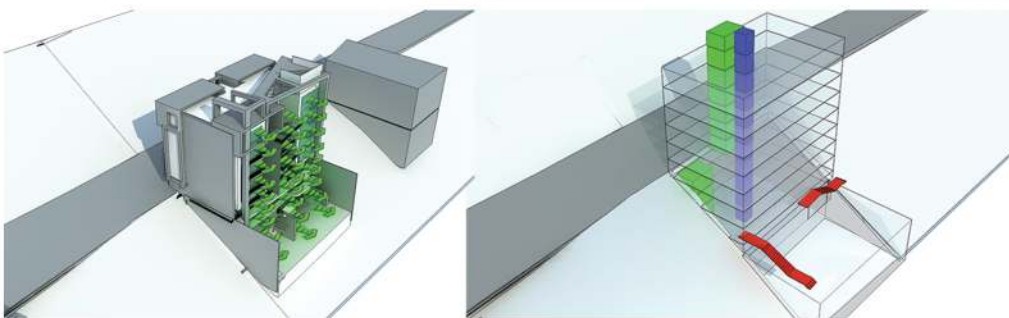


Terraces

Outdoor Vertical Access



- 2 Units ■
- 1 Unit ■
- 2 Units ■
- Common Spaces ■



South View for Livingrooms

Main Vertical Access ■

Emergency Vertical Access ■

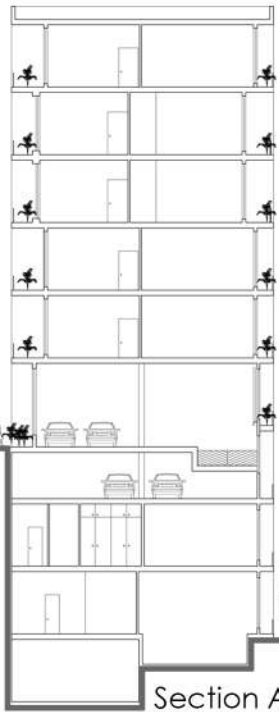
Outdoor Vertical Access ■

Bukan Residential Complex

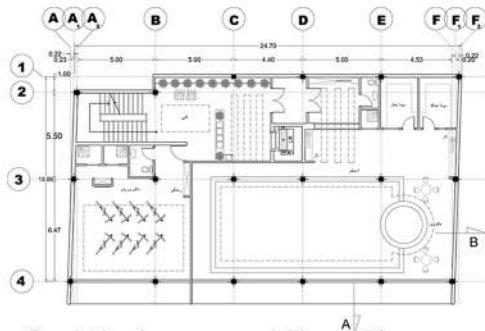


North View

North View



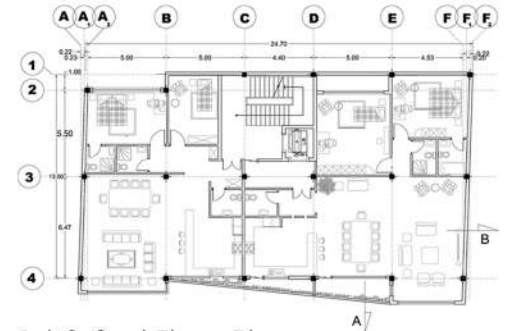
Section A-A



-2nd Underground Floor Plan



-3rd Underground Floor Plan

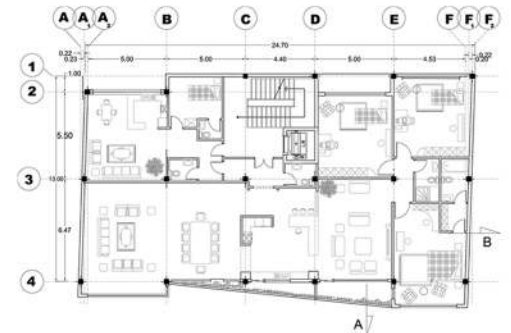


1st & 2nd Floor Plan

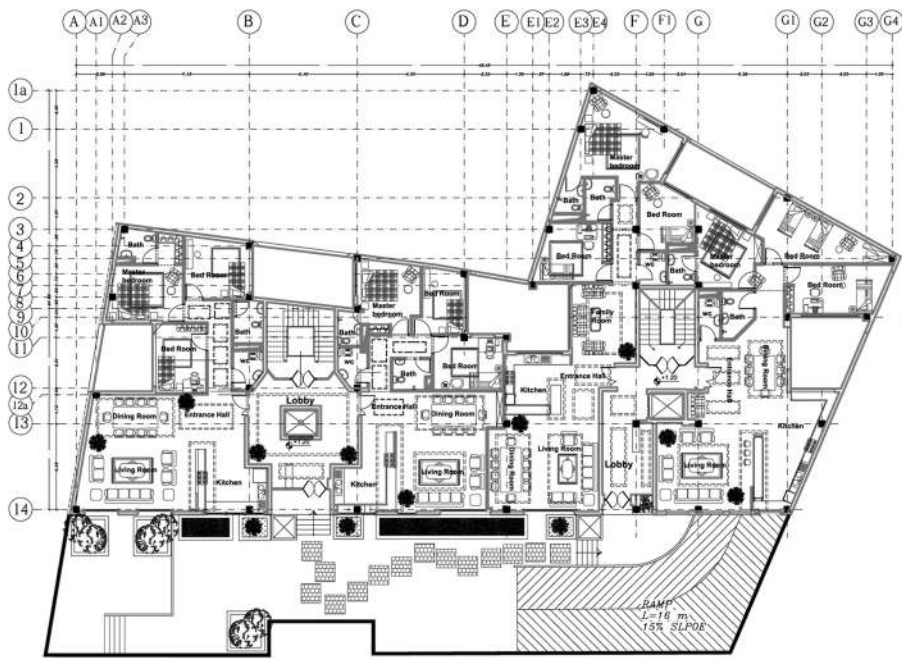
South View



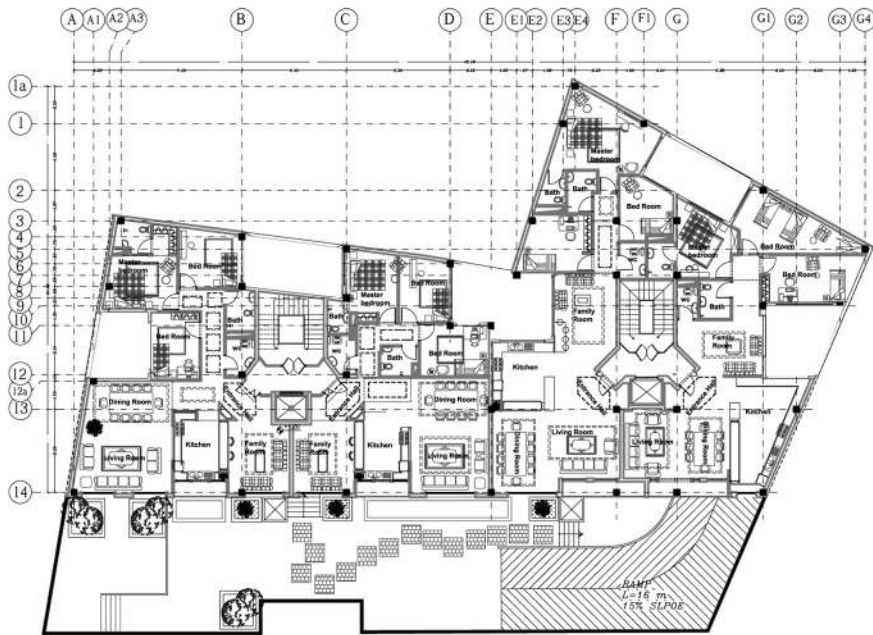
Section B-B



5th Floor Plan



Ground Floor Plan



First Floor Plan



Zafaranieh Residential Complex

Oman Multipurpose Cpmplex

Date:2014
Area:14000 Sqm

In Process...

Homakids Multipurpose Cpmplex

Date:2013-2014
Area:88000 Sqm

In Process...

Andisheh Cultural Cpmplex

Date:2011
Area:17000 Sqm

Falamak Multipurpose Complex

Date:2007
Area:45000 Sqm



Mixed-use





MUSCAT

The capital of the country – where traditional architecture sits beside stunning beaches and bustling souks – reflects Oman's past and its present. Set between the sea and rugged mountain ranges, Muscat, with its melting pot of cultures, is the perfect starting point for an Omani adventure.

Located at the foot of the Hajar Mountains, Oman's major mountain range, Muscat faces the Arabian Sea. Architecturally, the city is characterised by a typical oriental Arabesque style with its low-standing white and sand-coloured houses. The skyline is dotted with the minarets and domes of the city's mosques.

For thousands of years Oman has been a place of trading and encounters between the East and West, ensuring a country with a rich and fascinating culture. Since ancient times it has absorbed and given its own twist to traits and influences from India, Persia, Zanzibar, Portugal and the UK. Its conversion to Islam in the 7th century – in the moderate, tolerant form of Ibadism – was a strong unifying factor and has helped to hold together a blend of traditions and an acceptance of modernity.



UNESCO World Heritage Sites

A number of sites and cultural features in Oman have been added to the UNESCO World Heritage List. As well as the Land of Frankincense sites, they include the ingenious, multi-branched canals of the traditional irrigation systems known as aflaj. Then there are the historic sites of Bat, Al-Khutm and Al Ain, which form the largest and best preserved collection of settlements and necropolises from the 3rd millennium BC in the world. Finally, there is the immense fort in Bahla, capital of the Banu Nebhan tribe from the 12th to the end of the 15th century, which has been fully restored.

More information: whc.unesco.org/en/statesparties/om



Design Axis



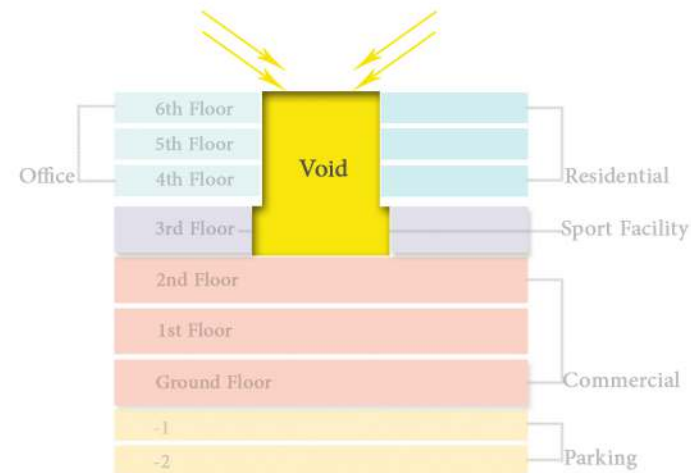
Use the separated entrance and exit in Parking



Roof plan		+30.60
6th Floor		+27.20
5th Floor		+23.80
4th Floor	Office	+20.40
3rd Floor		+15.30
2nd Floor		+10.20
1st Floor		+5.10
Ground Floor	Commercial	+0.00
-1		-3.40
-2	Parking	-6.80



Facade Alternative 1



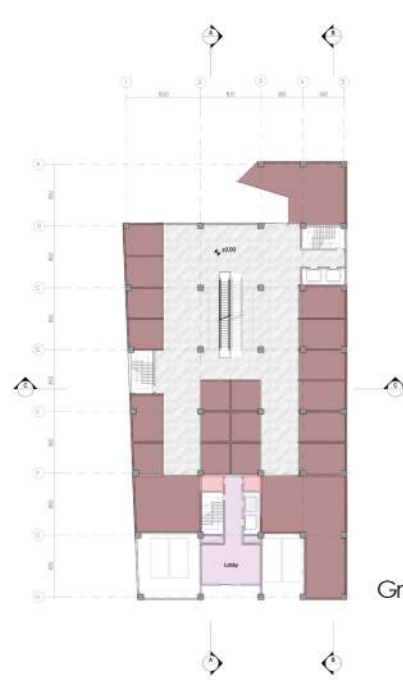
Create The Void for Reciving Enough Light

Legend :

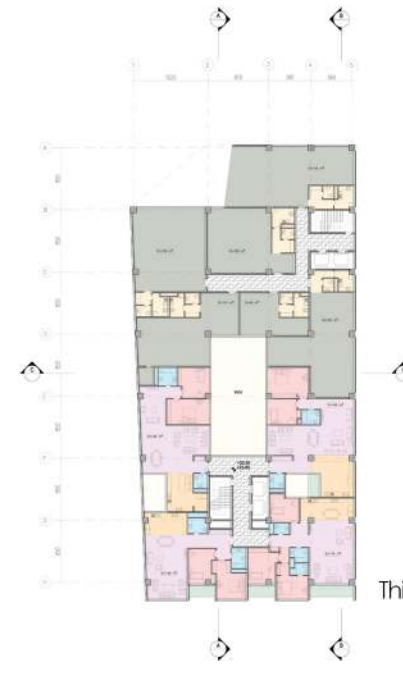
- Living
- Bedroom
- W.C & Bath
- Kitchen
- Office
- Pantry
- Pool
- Spa
- Sauna
- Gym
- Locker
- Treatment
- Commercial
- Parking
- Store
- Mechanical



Basement Plan



Ground Floor Plan



Third Floor Plan

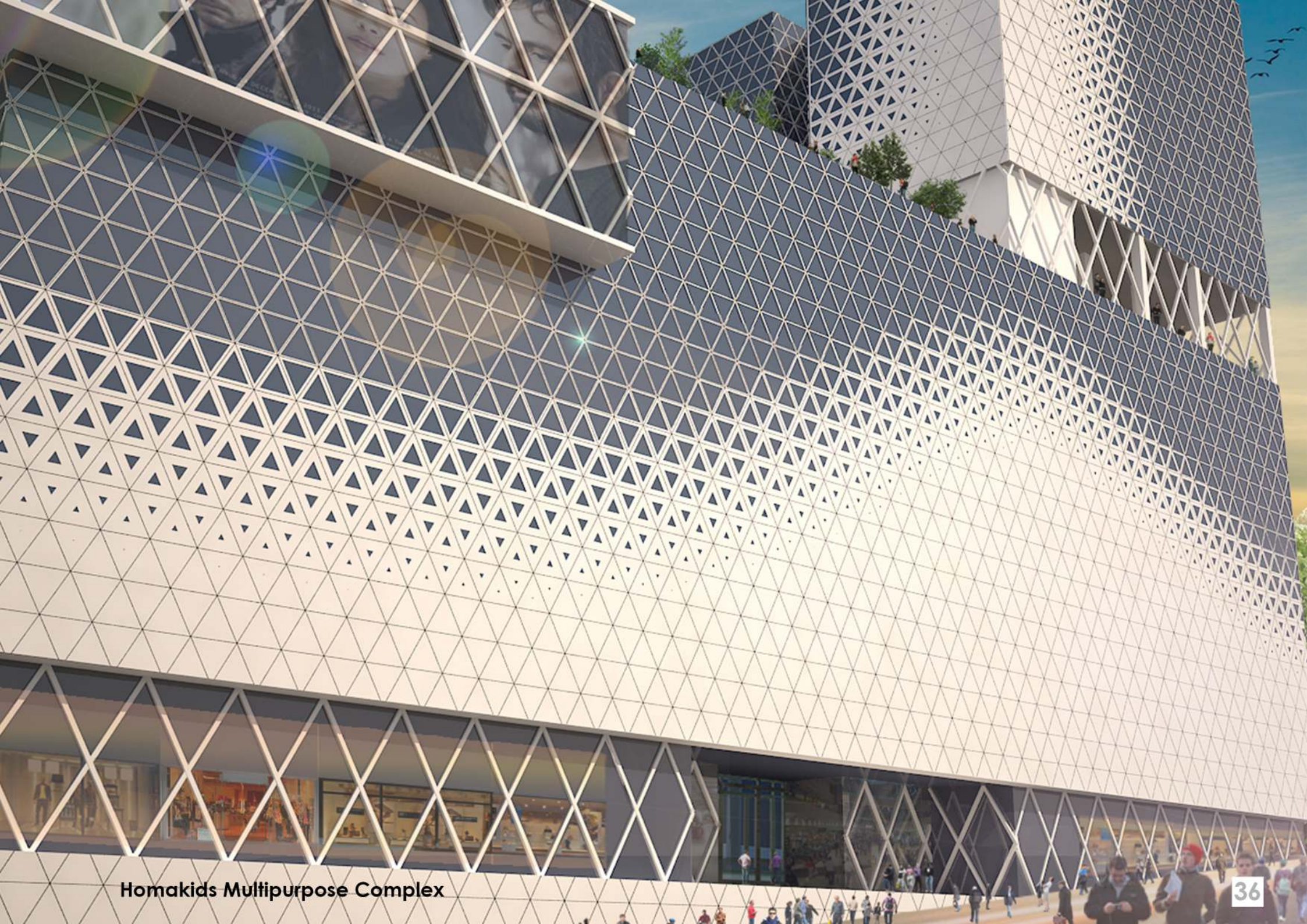


4th & 5th Floor Plan

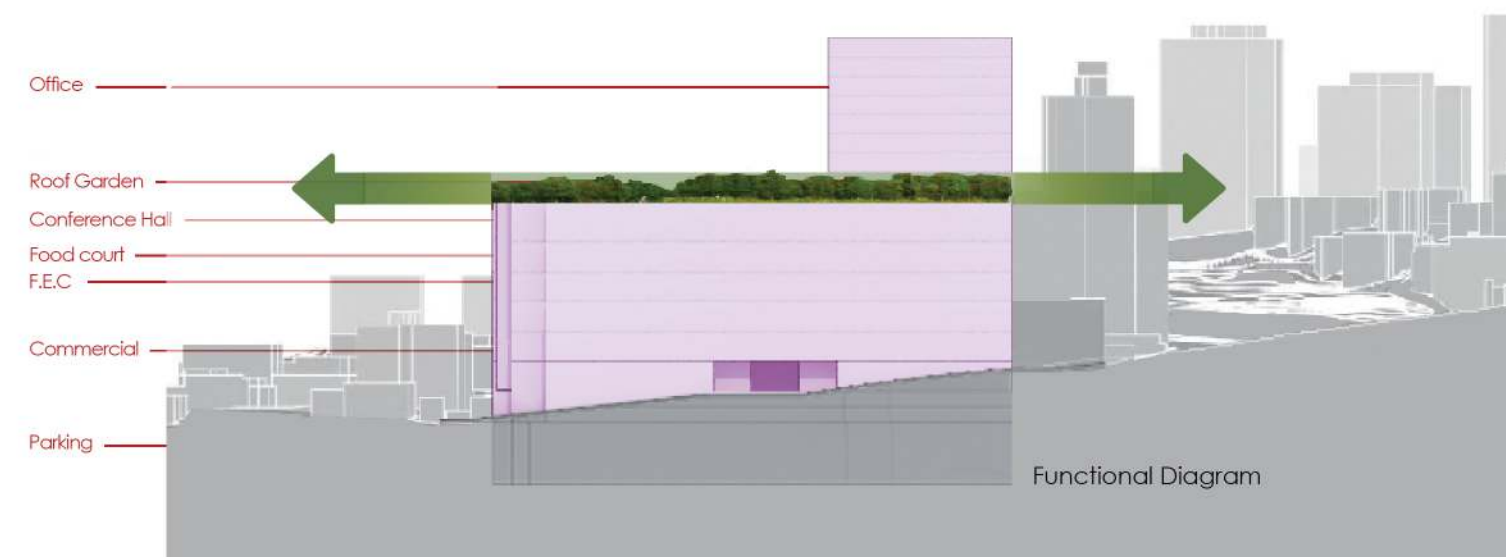
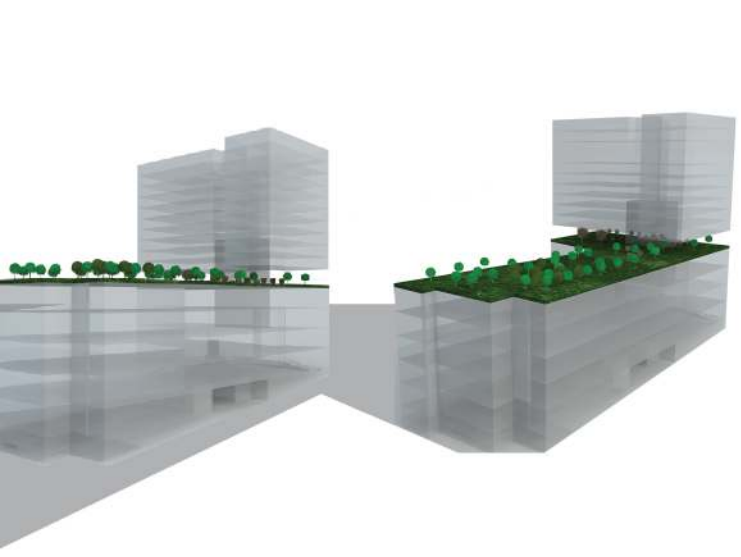
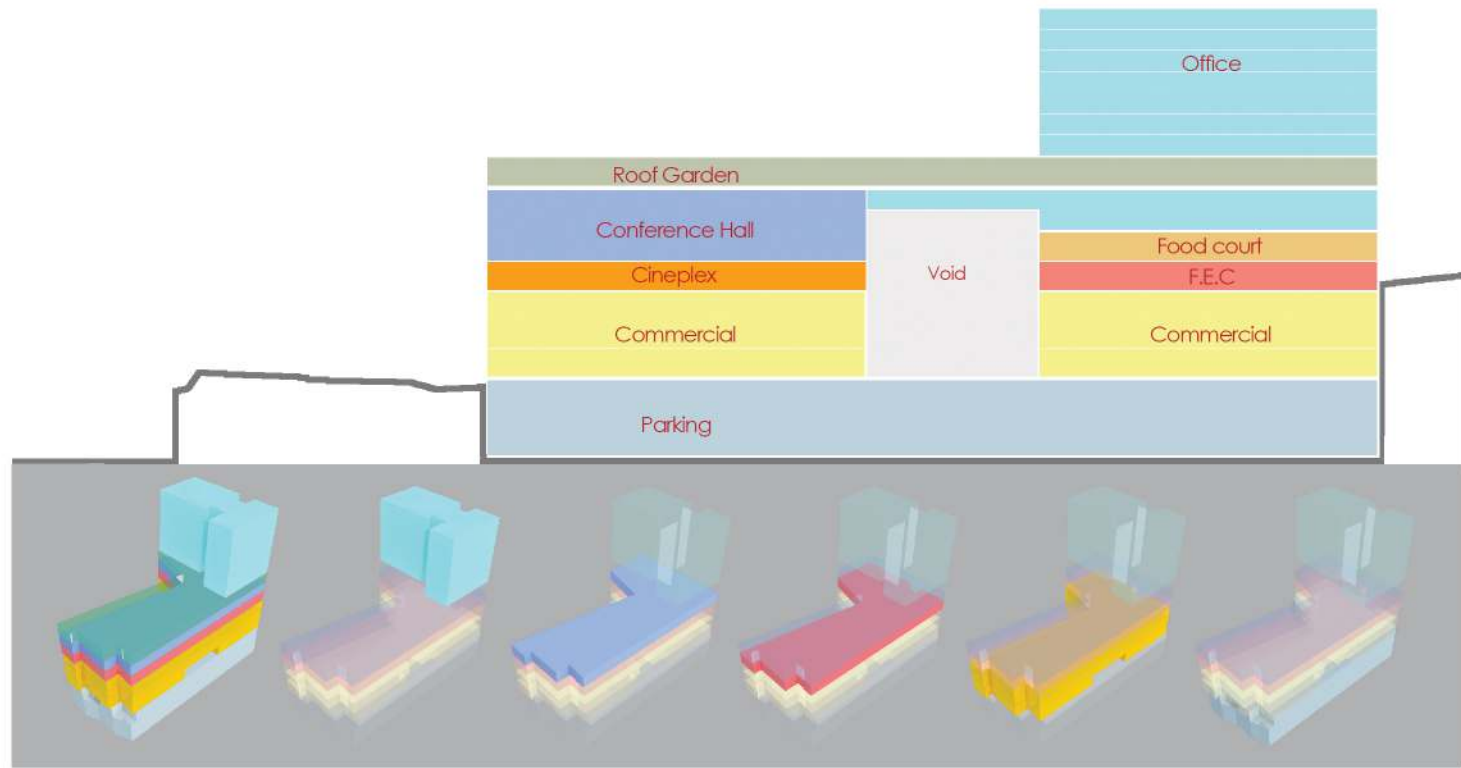
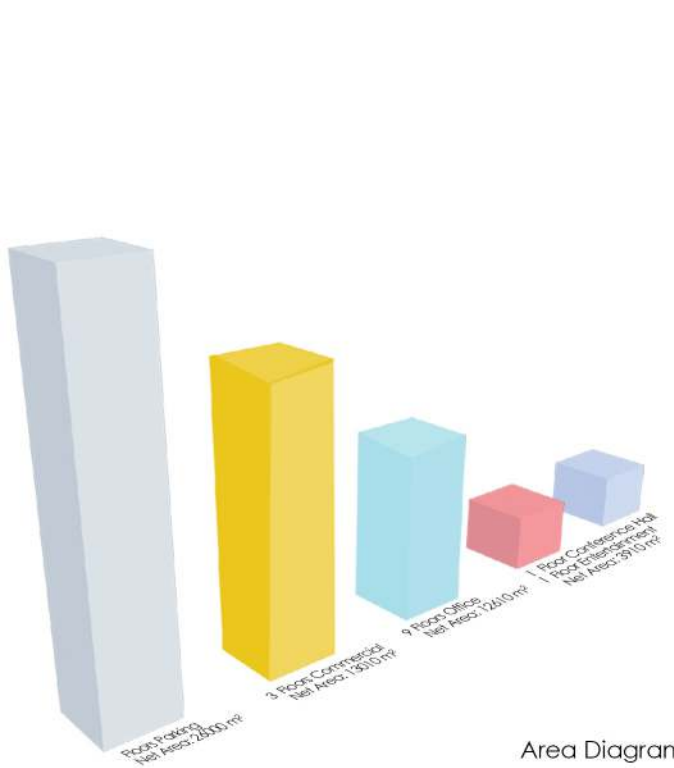


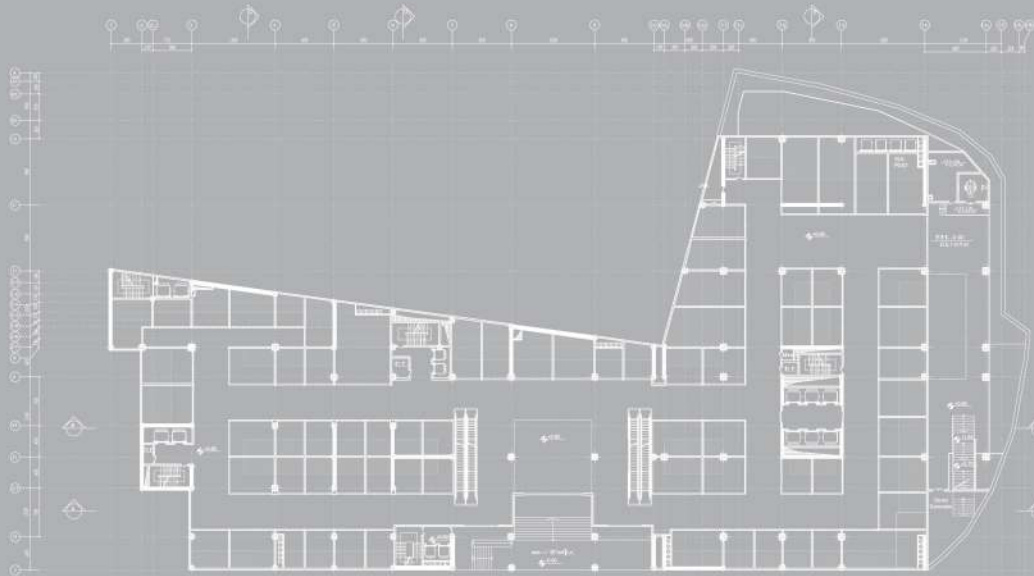
Sec A-A

Oman Multipurpose Complex

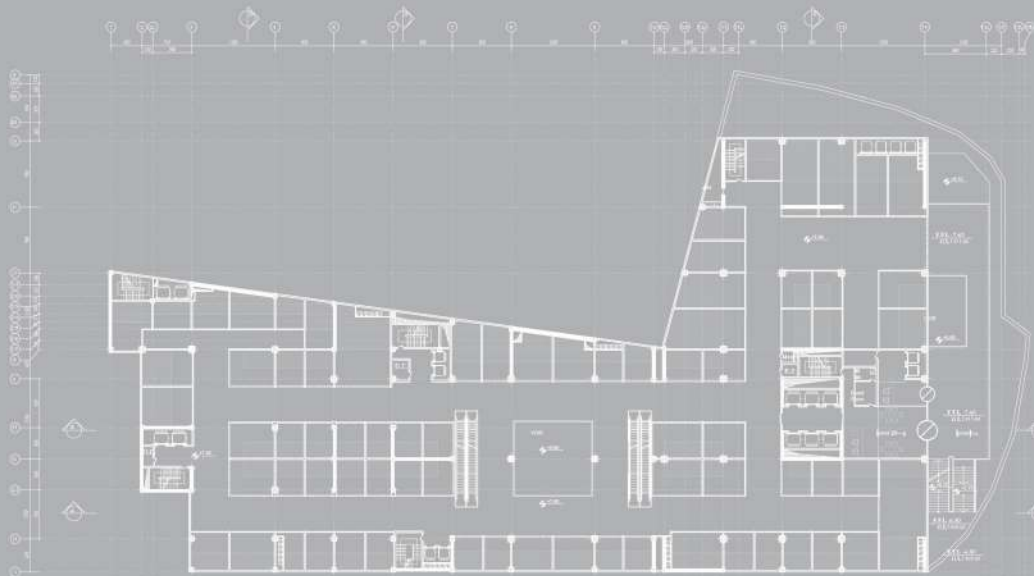


Homakids Multipurpose Complex

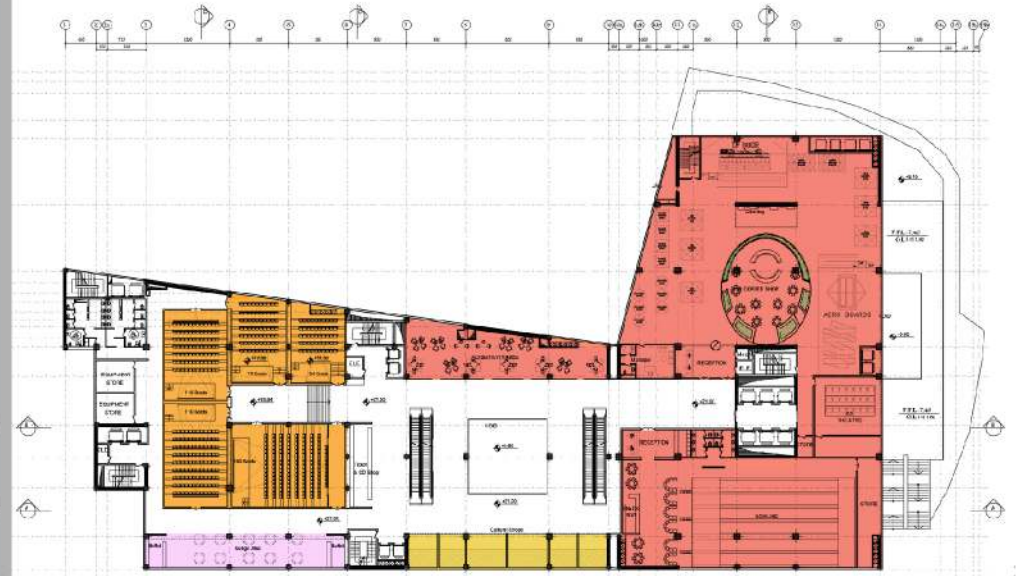




Ground Floor Plan



Typical Commercial Plan



Entertainment Floor Plan

- F.E.C ■
- Cineplex ■
- Commercial ■
- Lounge Area ■

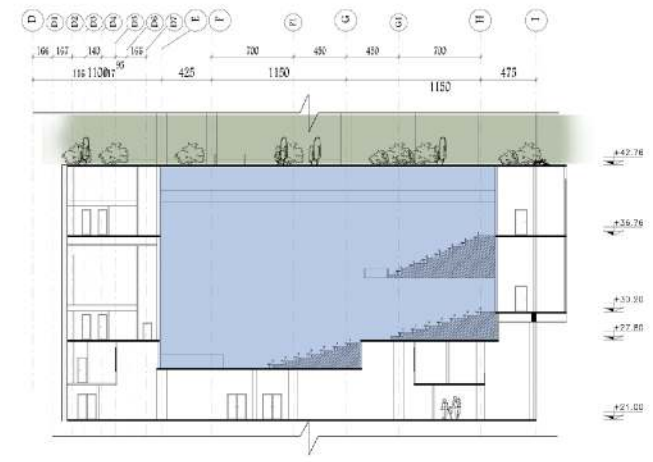


Section A_A

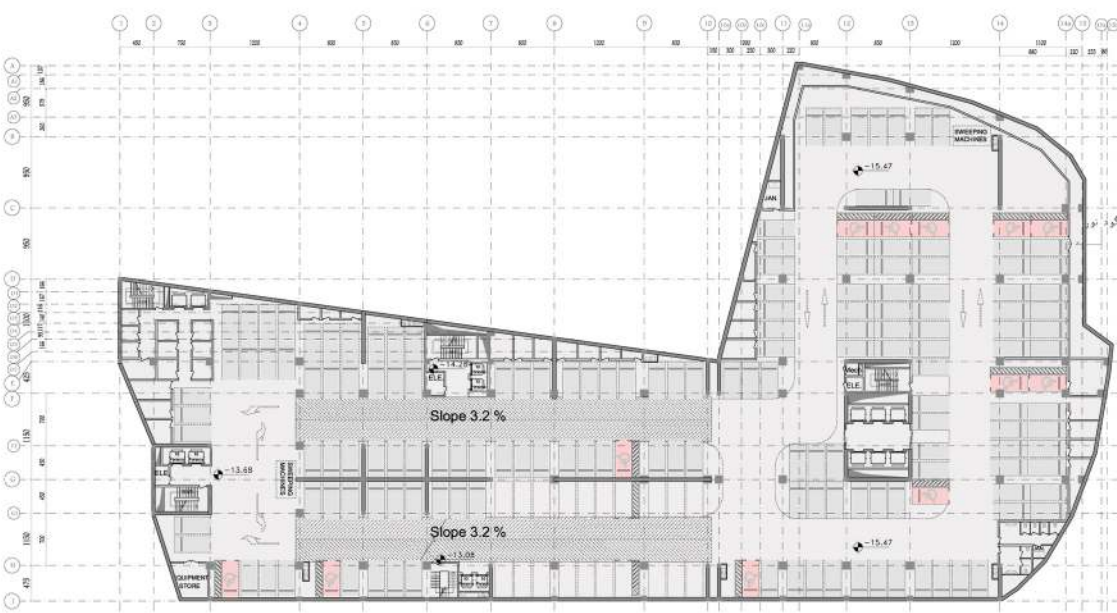


4th Floor Plan

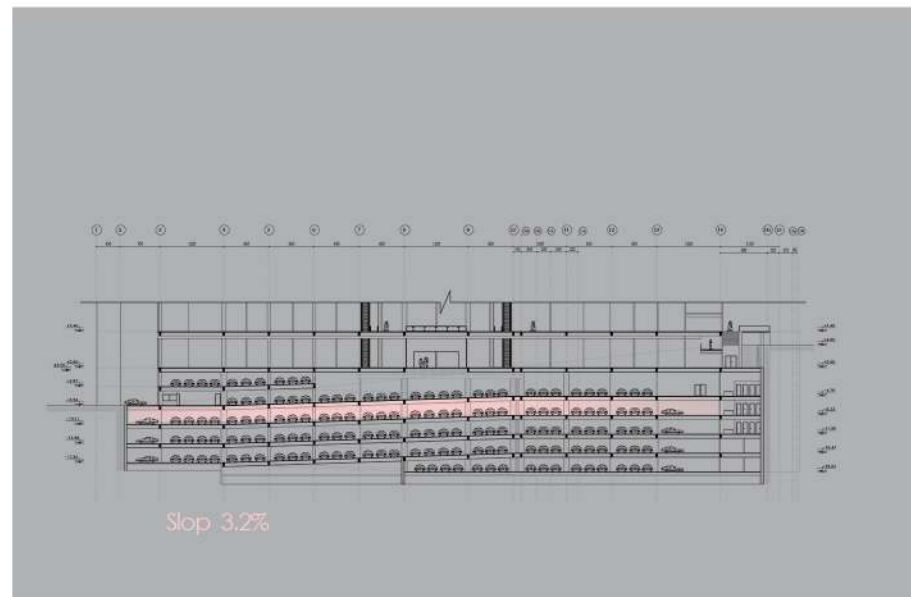
- Conference Hall ■
- Food Court ■
- Office ■
- Cofe ■



Conference Hall Section



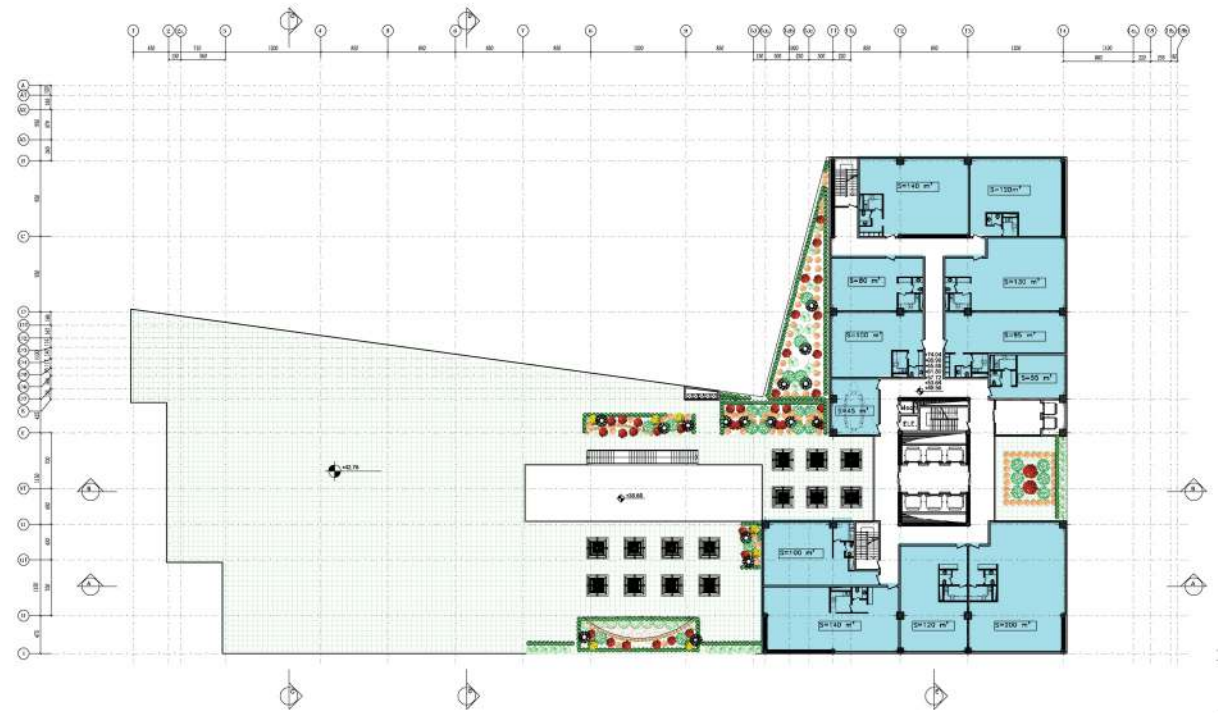
Typical Parking Plan



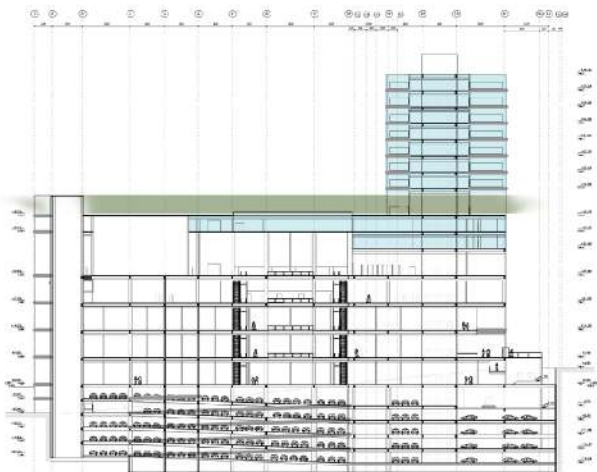
Slop 3.2%



Interior design of Administrative units



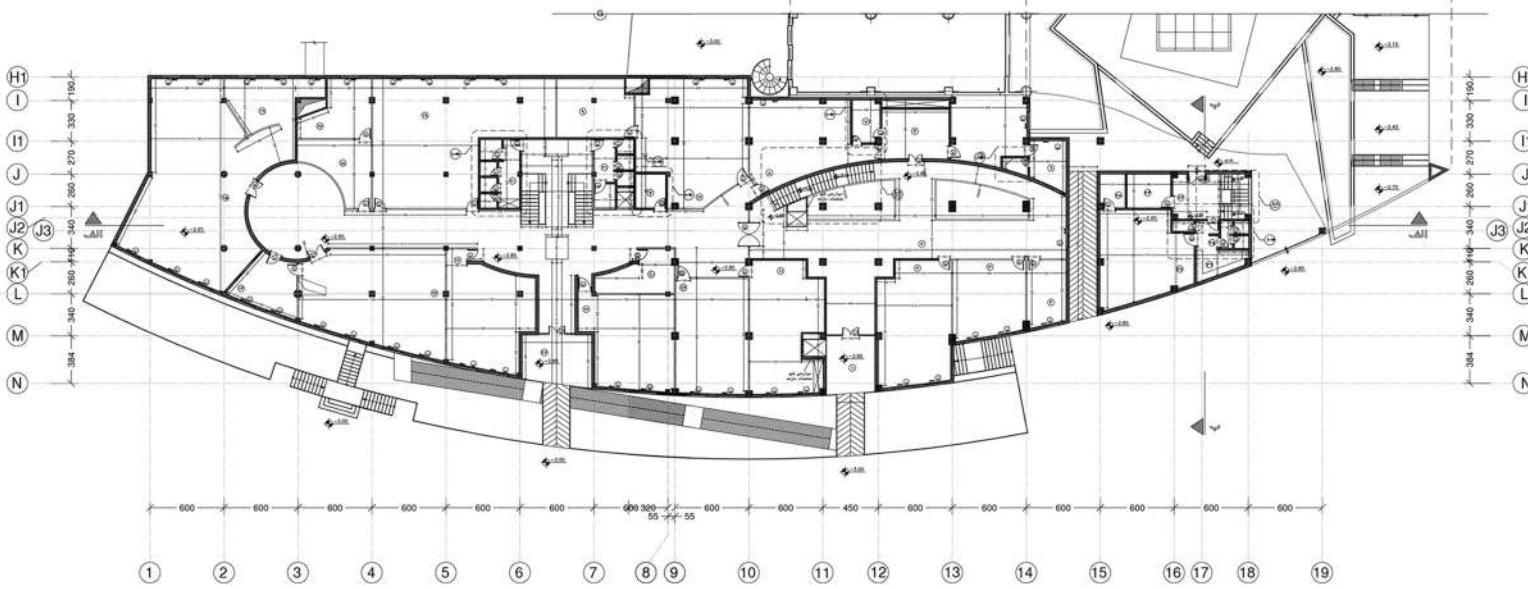
Typical Office Plan



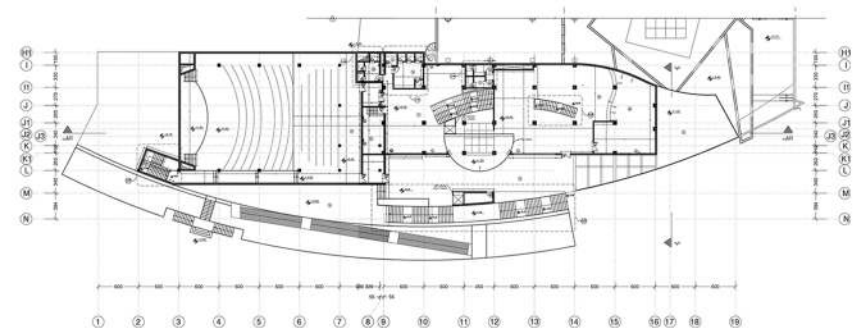
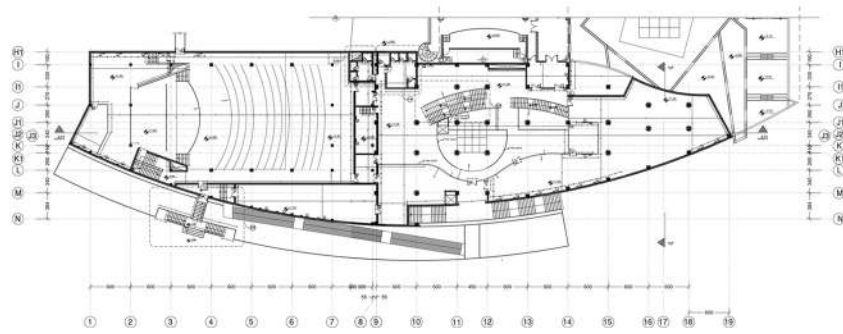
Office Levels Section

Homakids Multipurpose Complex





Ground Floor Plan



First Floor Plan

Second Floor Plan





Ground Floor Plan



First Floor Plan



Typical Administrative & Therapeutic Floor Plan



Falamak Multipurpose Complex



2nd Alghadir
Residential Complex

Date:2014
Area:43200 Sqm



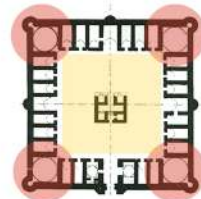
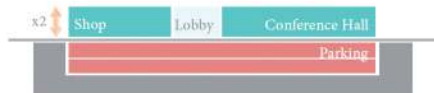
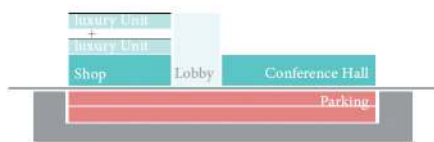
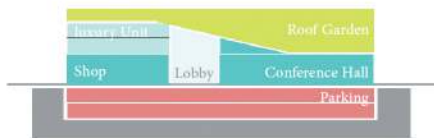
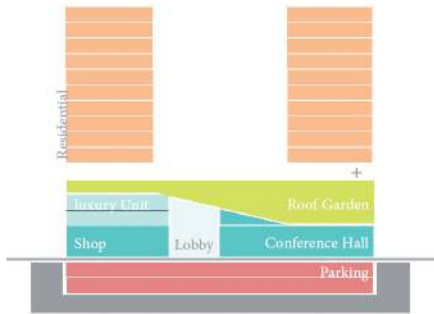
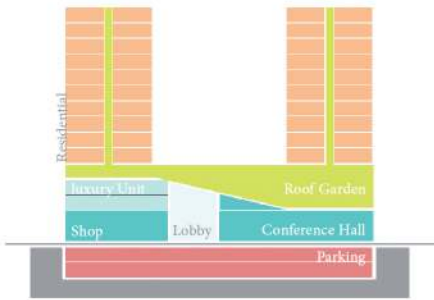
Shemshak
Resort Complex

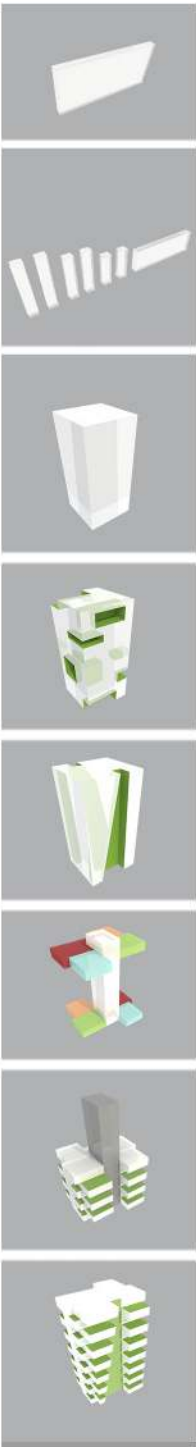
Date:2013
Area:25000 Sqm



Competition







Legend :

- 1. Living Room
- 2. Bed Room
- 3. Kitchen
- 4. Atrium
- 5. Trace



Furniture Plan-Type A



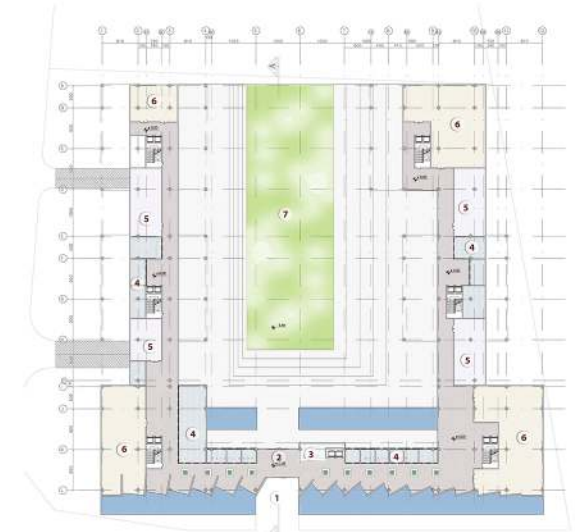
Furniture Plan-Type B



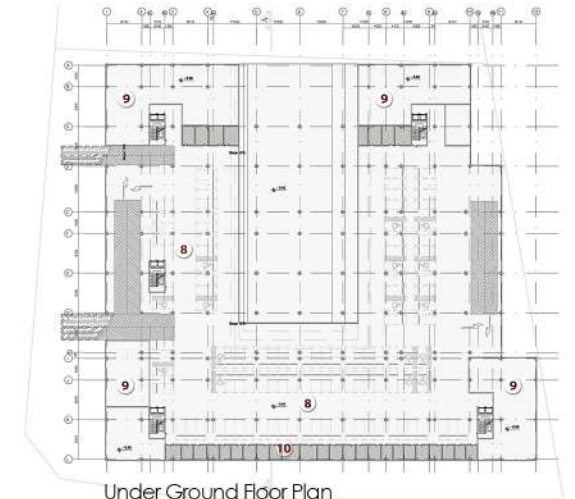
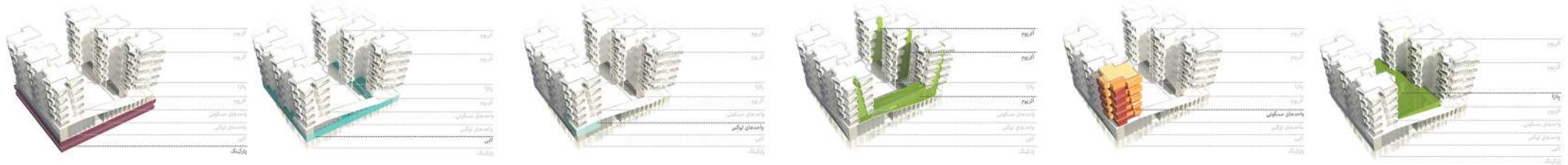


Legend:

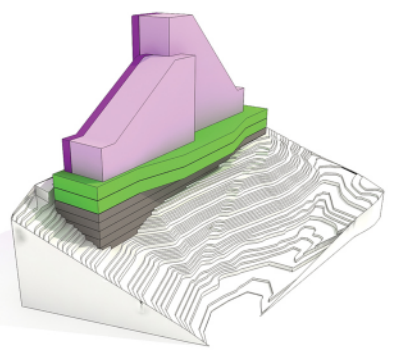
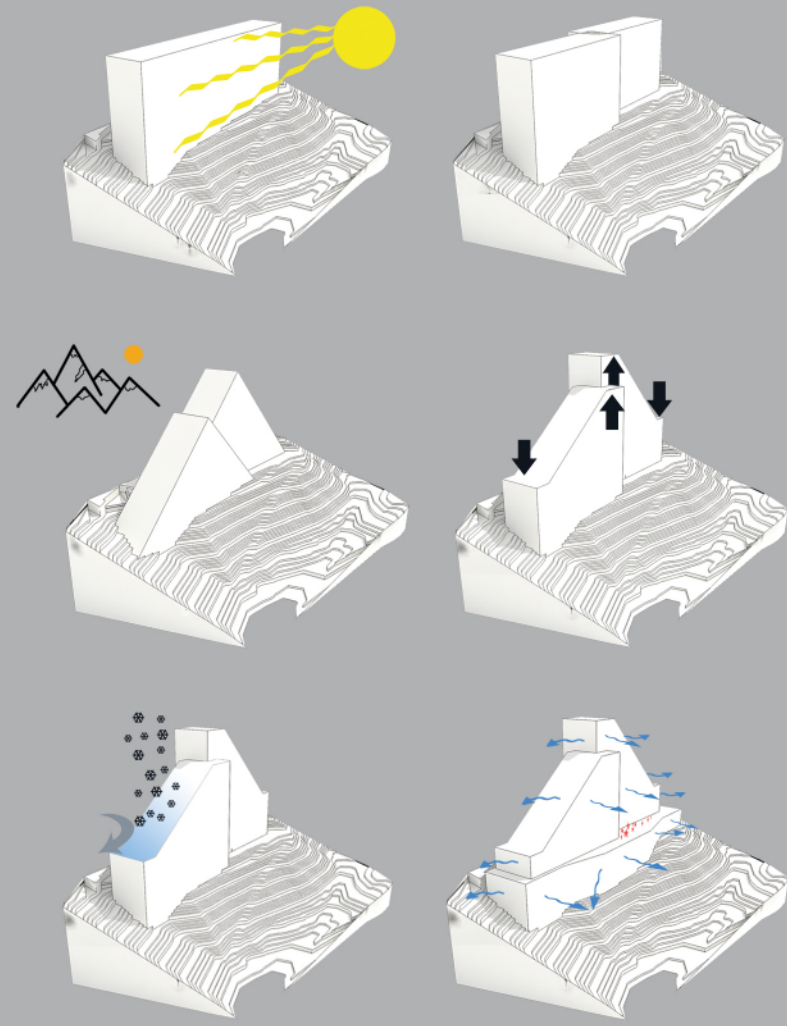
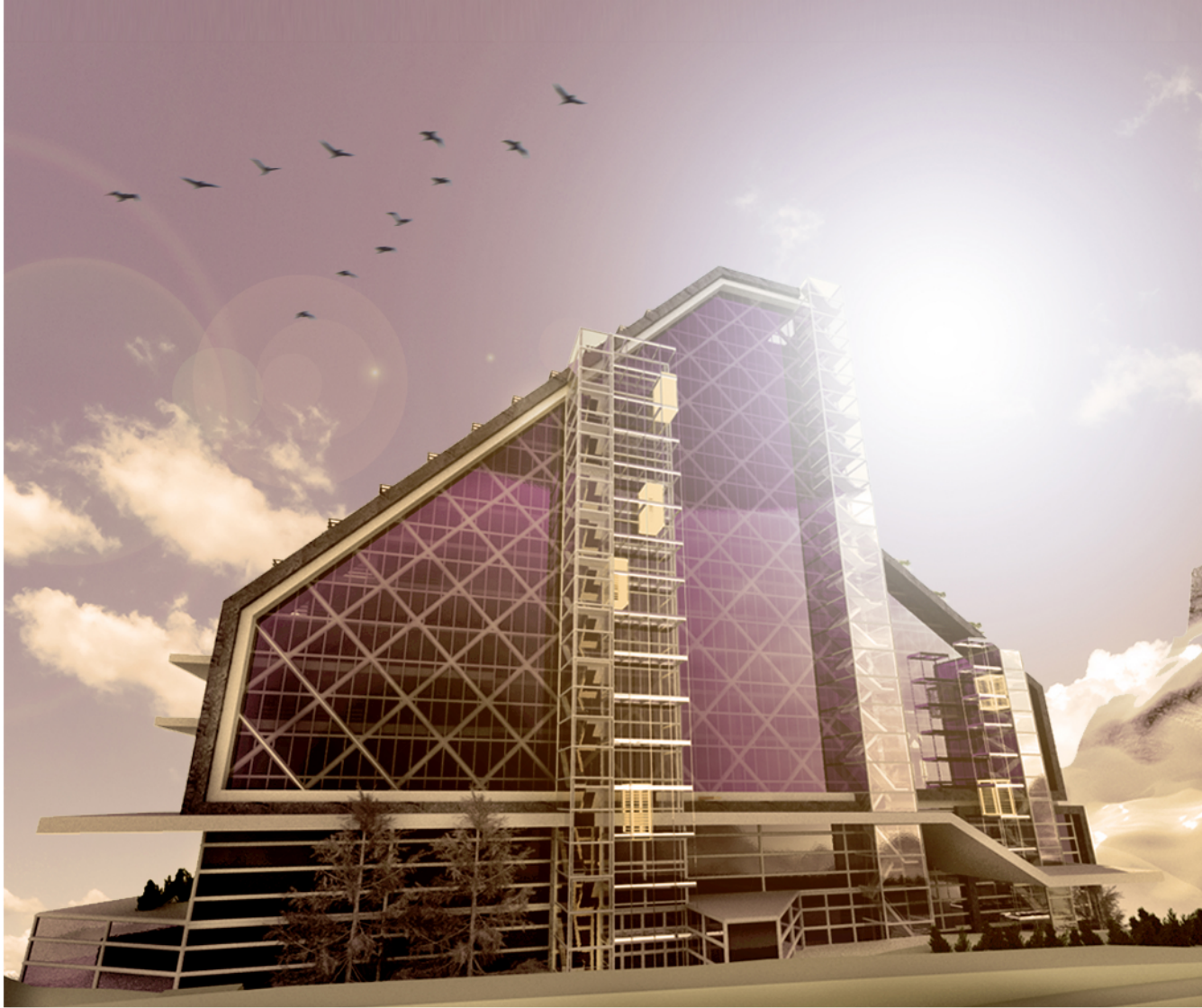
- 1. Entrance
- 2. Lobby
- 3. Reception
- 4. Shop
- 5. Gym
- 6. Conference Hall
- 7. PLAZA
- 8. Parking
- 9. Mechanical Room
- 10. Storage



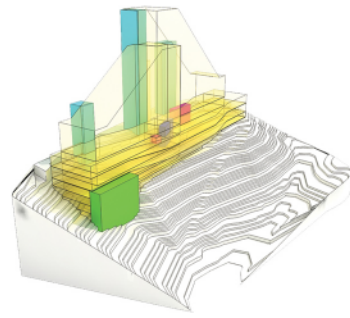
Ground Floor Plan



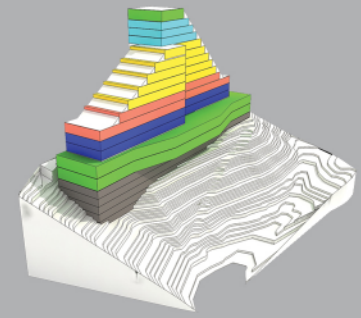
Under Ground Floor Plan



- CORRIDORS
- APARTMENTS
- PUBLIC
- PARKING

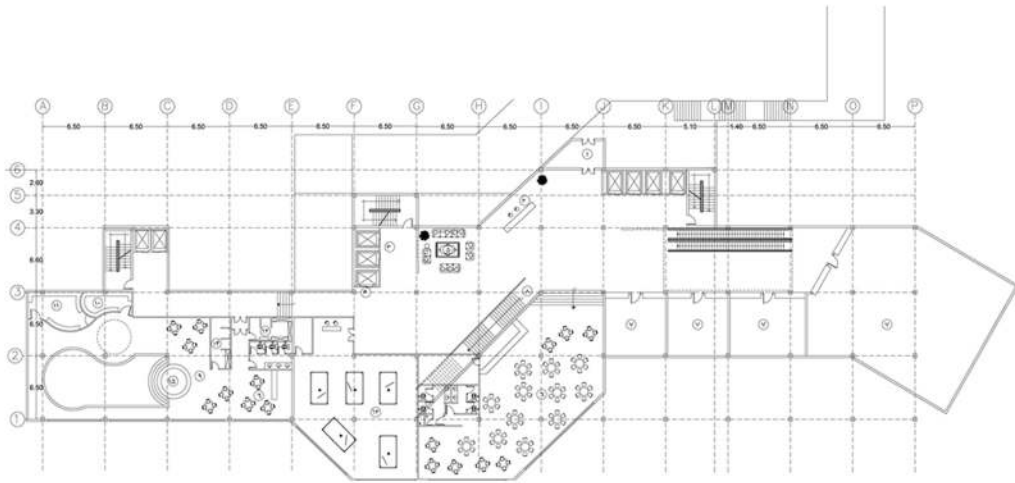


- GENERAL LIFTS & STAIRS
- RESTORANT STAIRS
- ELECTRICAL STAIR
- CARS RAMP

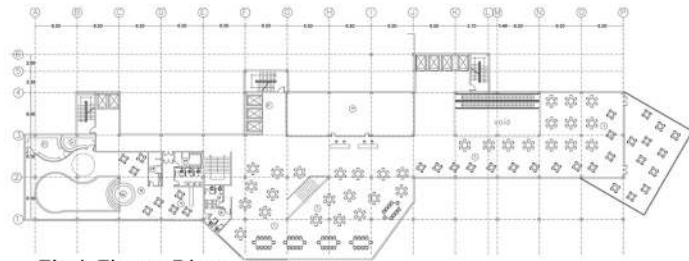


- 200 M2 AP.
- 100 M2 AP.
- 75 M2 AP.
- 50 M2 AP.
- PARKING
- PUBLIC

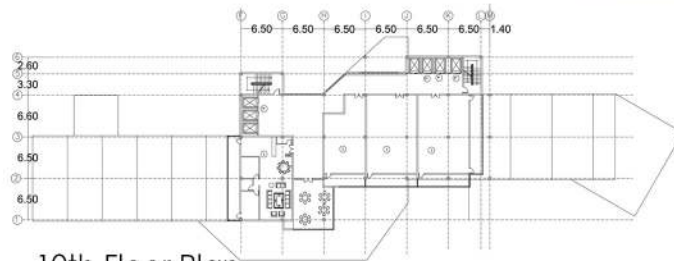
Shemshak Resort Complex



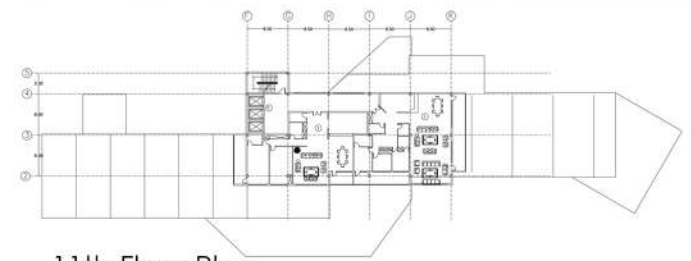
Ground Floor Plan



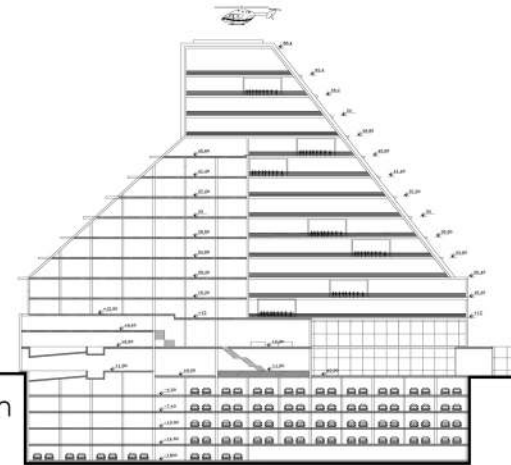
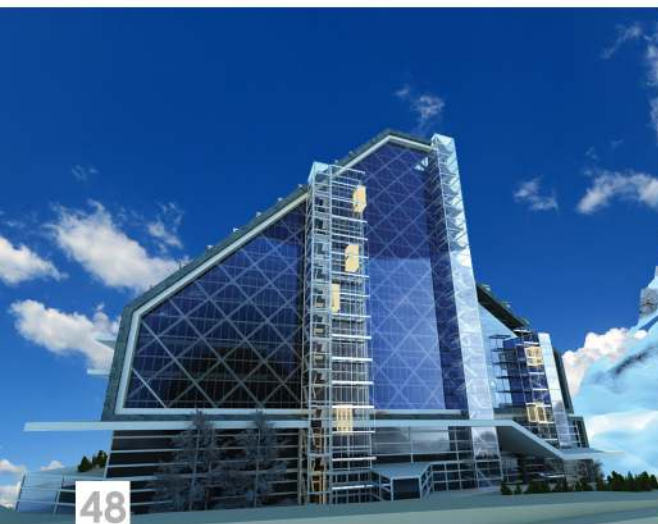
First Floor Plan



10th Floor Plan



11th Floor Plan



Section A-A

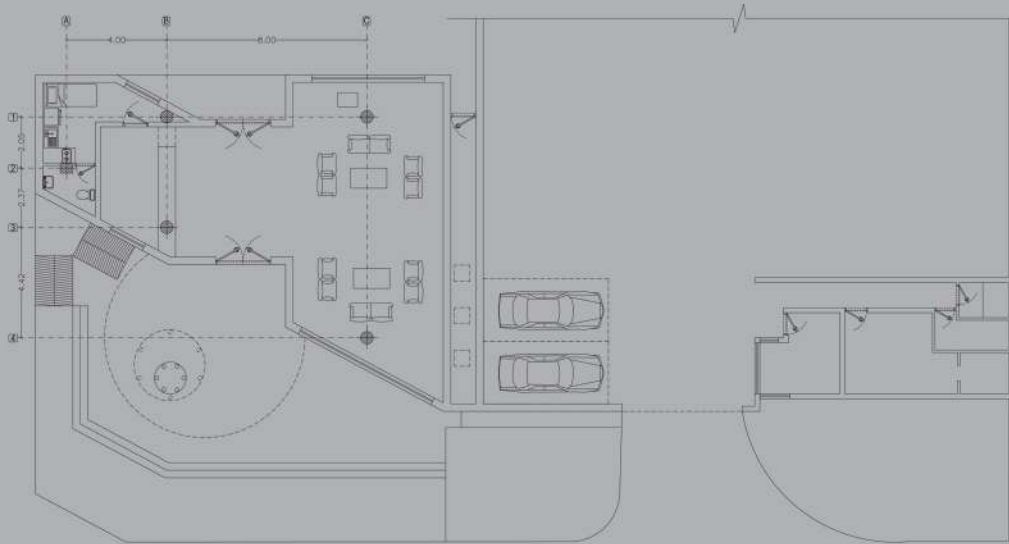
Shemshak Resort Complex

Mahestan Complex
Lobby

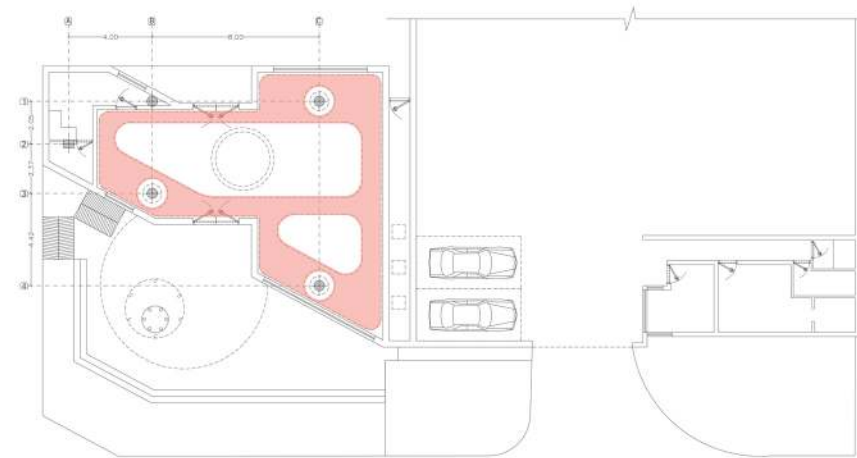
Date: 2017
Area: 183 Sqm



Interior Design

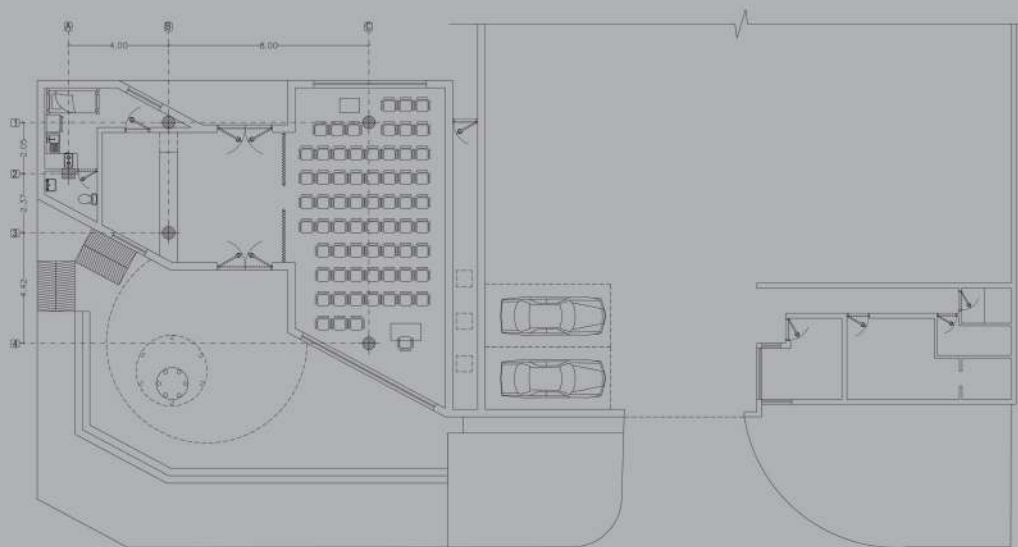


Lobby Floor Plan



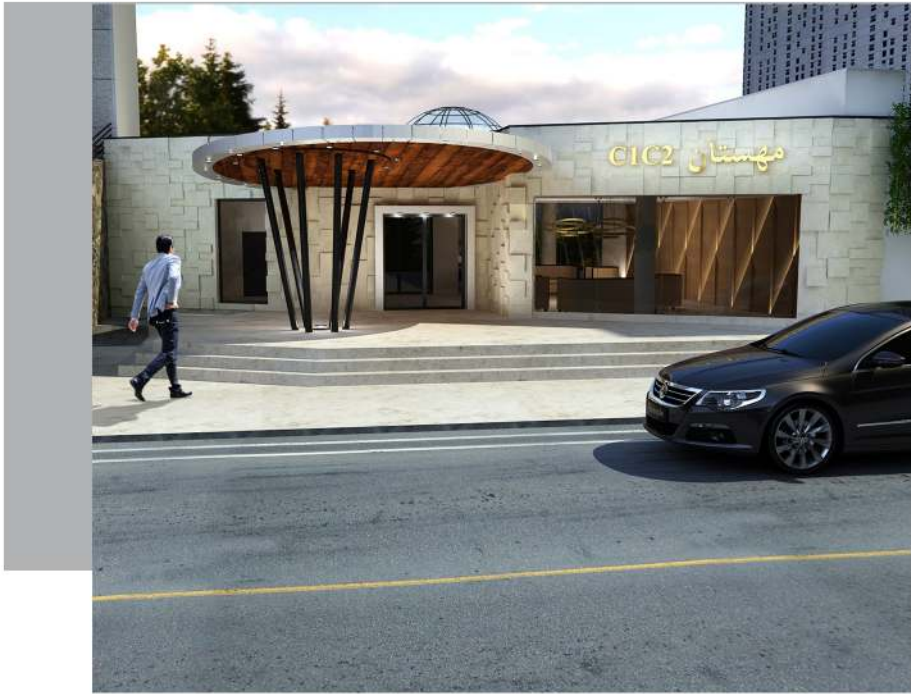
False Ceiling Plan

False Ceiling ■



Mahestan Complex Lobby





Mahestan Complex Lobby Exterior View



Mahestan Complex Lobby Exterior View



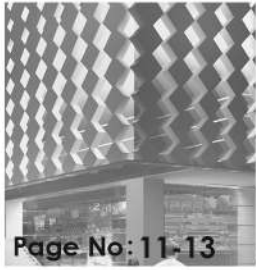
Mahestan Complex Lobby Exterior View



Mahestan Complex Lobby Exterior View



Mahestan Complex Lobby Exterior View



Page No: 11-13

Kaveh Complex



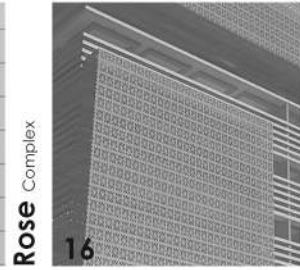
14

Rose Complex



15

Shaghayegh Complex



16

Parastou Complex



17

Niloufar Complex



18-19

Sepehr Complex



Page No: 20-22

Baharan Complex



23

Armaghan Complex



24

Bozorgmehr Complex



25-26

Arghavan Complex



27

Mohamadshahr Villa



28

Kelardasht Villa



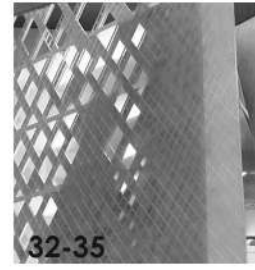
Page No: 29-30

Bukan Complex



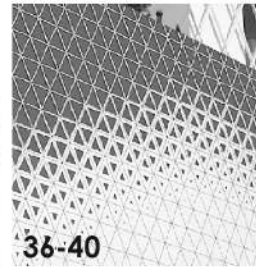
31

Zafaranih Complex



32-35

Oman Complex



36-40

Homakids Complex



41

Andishe Complex



42

Falamak Complex



Page No: 43-46

2nd Alghadir Complex



47-48

Shemshak Complex



Mahestan Complex



HTSH Consulting Engineers
Architecture | Urban Design | Interior design

3rd Unit, No.10, Baharan Alley,
South Shiraz Ave, Mollasadra St,
Tehran, Iran

Tel: 98 21 882 140 25

Fax: 98 21 882 140 24

www.heramtarh.com

htshco@gmail.com

HTSH Consulting Engineers
Architecture | Urban Design | Interior design





HTSH Consulting Engineers

Architecture | Urban Design | Interior design

HTSH Co. as an architectural company is based on creative architects, designers and builders to present innovative ideas according to modern technologies and dreams of clients.

This ability is the result of attendance in world of industry and construction by effort of proficient managers, **since 1991**. Recent design and executive teams with more capabilities continue this path by creative and young members to produce novel concepts and design for private and governmental projects.

Also, HTSH has started cooperation with raised and known architectural companies in the world such as **Schuster pechtold** as a powerful one in region.

All endeavors of company are to create not only beautiful concepts, but also beautiful buildings.

Commercial

Office

Residential

Mixed-use

Competition



Projects

Projects

Commercial	Client	Area	Date
Kaveh Commercial Complex	Tose-e-Sakhteman Kharazmi	13500 Sqm	2014
Fadak Commercial Complex	Tehran Municipality - Region 13	7800 Sqm	2008
Shaghayegh Commercial & Parking Complex	Tehran Municipality - Region 7	51000 Sqm	2007
Rose Commercial & Parking Complex	Tehran Municipality - Region 7	62200 Sqm	2007
Parastou Commercial & Parking Complex	Tehran Municipality - Region 7	30000 Sqm	2007
Niloofar Commercial & Parking Complex	Tehran Municipality - Region 7	54800 Sqm	2006
Residential			
Sadr Residential Complex	Private Sector	4500 Sqm	2013
Arghavan Residential Complex	Private Sector	2800 Sqm	2012
Mohammad Shahr Villa	Private Sector	700 Sqm	2011
Kelardasht Villa	Private Sector	600 Sqm	2010
Bukan Residential Complex	Private Sector	3800 Sqm	2010
Zafaraniyeh Residential Complex	Tose-e-Sakhteman Kharazmi	5500 Sqm	2008

Projects

Office	Client	Area	Date
Sepehr Office & Commercial Building	Tose-e-Sakhteman Kharazmi	19700 Sqm	2014
5th Rozhin Office Building	Private Sector	3800 Sqm	2013
Aria Office & Commercial Building	Tose-e-Sakhteman Kharazmi	54800 Sqm	2012
Ofogh Office & Commercial Building	Tose-e-Sakhteman Kharazmi	5100 Sqm	2012
Baharan Office Building	Tose-e-Sakhteman Kharazmi	2500 Sqm	2011
Armaghan Office Building	Tose-e-Sakhteman Kharazmi	3800 Sqm	2006
Bozorgmehr Office Building	Tose-e-Sakhteman Kharazmi	12700 Sqm	2006
Mixed-Use			
European Complex	Gulf Muscat United C.	15000 Sqm	2014
HomaKids Multipurpose complex	Tose-e-Sakhteman Kharazmi	87000 Sqm	2013
Andisheh Cultural Complex	Tehran Municipality - Region 7 Omran-sazan Ziggurat Company	17000 Sqm	2011
Shaghayegh Multipurpose Complex	Tose-e-Sakhteman Kharazmi	65000 Sqm	2010
Falamak Multipurpose Complex	Natanz Steel Company	45000 Sqm	2007

Projects

Interior Design	Client	Area	Date
International Hotel Doshanbe (Tajikestan)	Payvaran Omran Asia Company	13500 Sqm	2014
Derafshi-far Persepolis Stadiums	Heroes and pioneers of the sport Company	7000 Sqm	2011
Main Office Building	Zahedan Housing Foundation	17000 Sqm	2010
Sepidar Library	Omran-sazan Ziggurat Company	12000 Sqm	2009
Sport Complex			
Women Sport Complex (Tajikestan)	Payvaran Omran Asia Company	4500 Sqm	2008
Hakimieh Sport Complex For Disabled	Omran-sazan Ziggurat Company	1800 Sqm	2007
Competition			
Shemshak Resort Complex	Private Sector	25000 Sqm	2013
2nd Alghadir Residential Complex	Qom Housing Cooperative	43200 Sqm	2014

Kaveh
Commercial Complex

Date:2014
Area:13500 Sqm



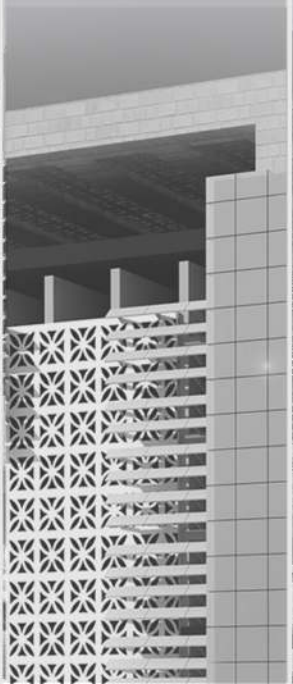
Shaghayegh Commercial &
Parking Complex

Date:2007
Area:51000 Sqm



Rose Commercial &
Parking Complex

Date:2007
Area:62200 Sqm



Parastou Commercial &
Parking Complex

Date:2007
Area:30000 Sqm



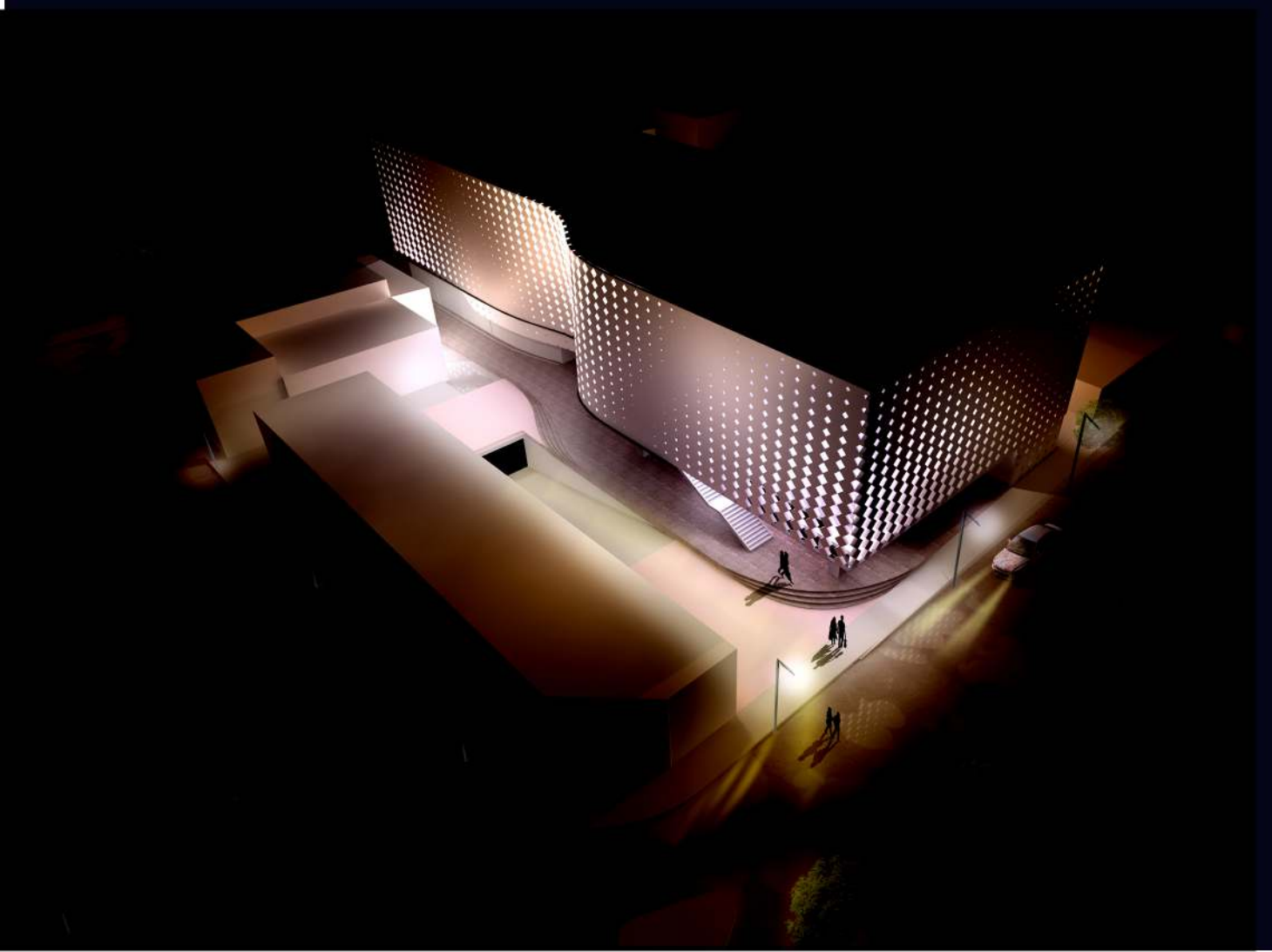
Niloofer Commercial &
Parking Complex

Date:2006
Area:54800 Sqm



HTSH Consulting Engineers

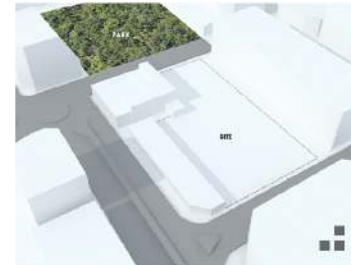
Commercial



Site Location



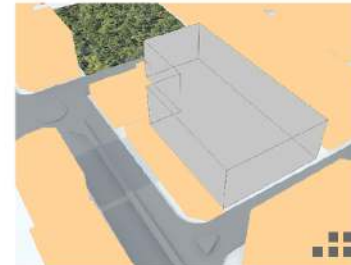
Local Access to the Site



Site Area



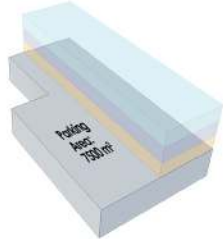
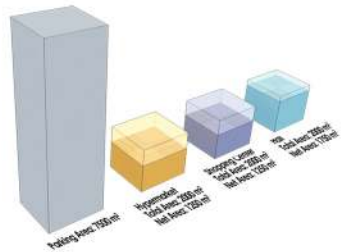
Buildable Area



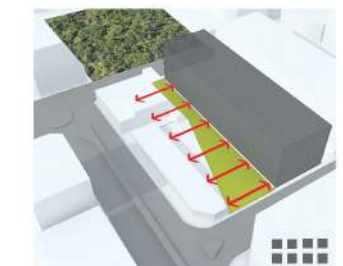
injected public space



Interaction between public space and park



injected public Activity



Interaction between injected public space and the building



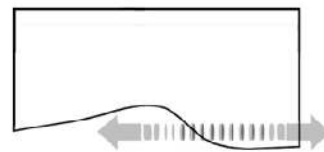
The initial volume



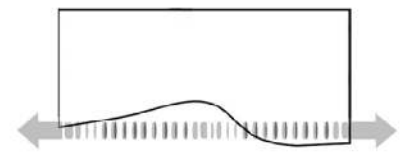
Create porch



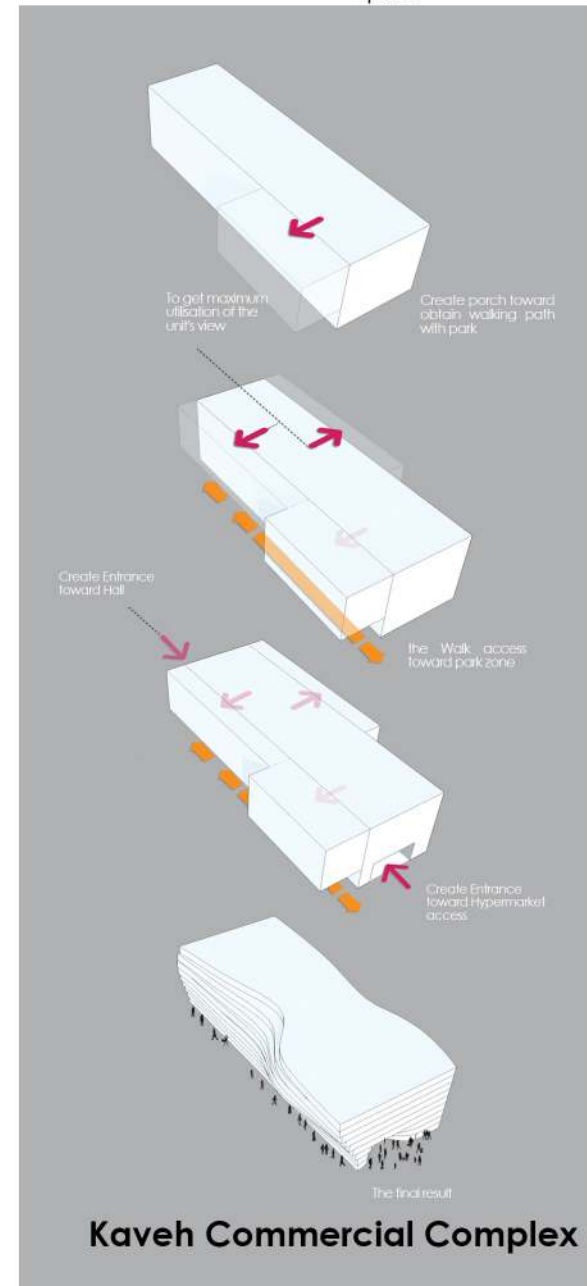
To get maximum utilisation of the unit's view



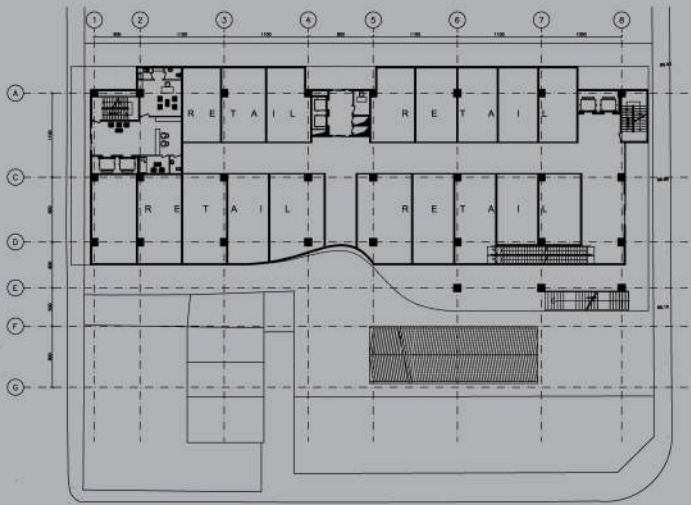
The Walk access



Intraction between public space and park



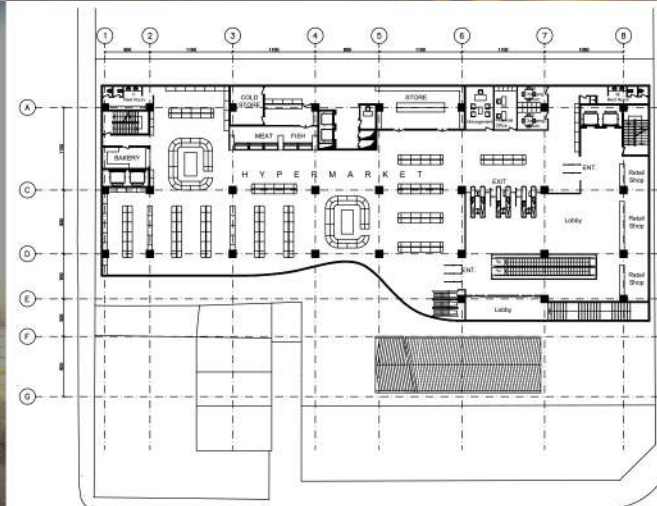
Kaveh Commercial Complex



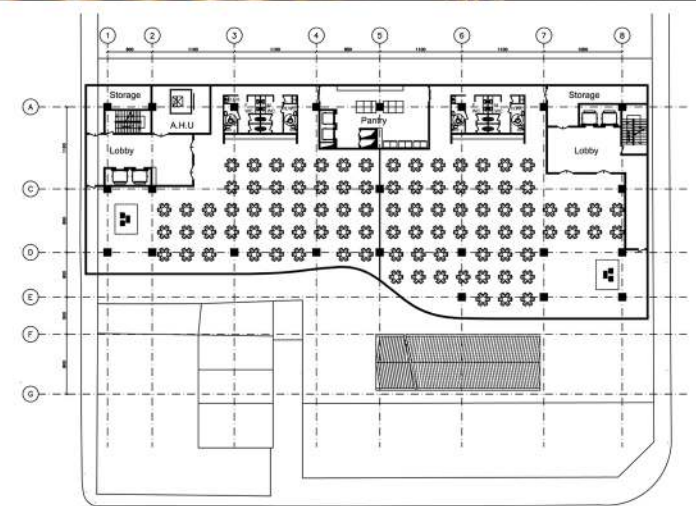
Ground Floor Plan



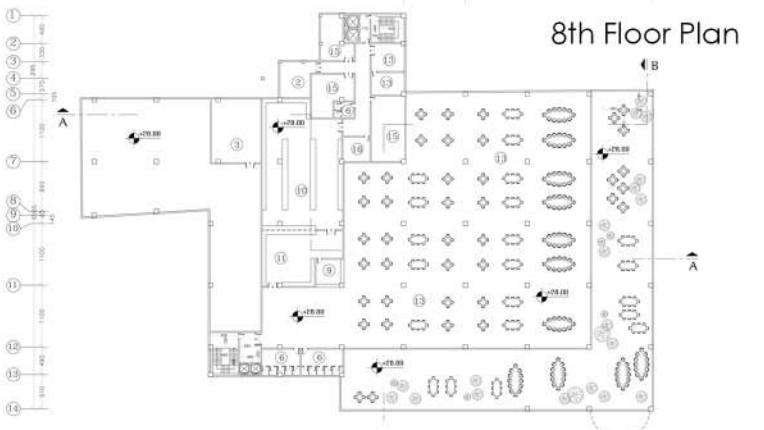
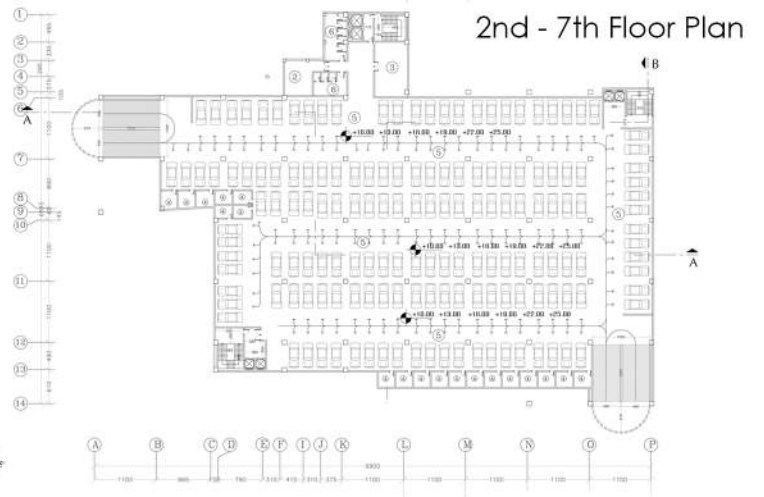
Kaveh Commercial Complex



First Floor Plan



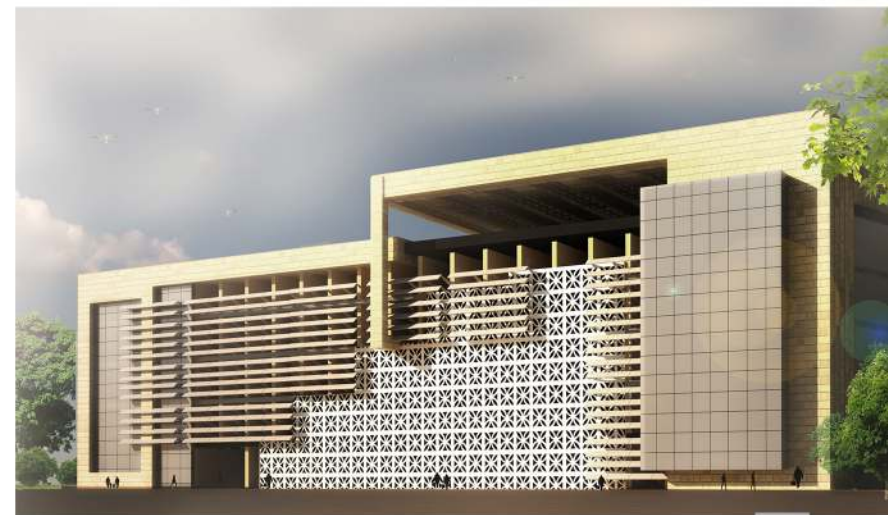
2nd Floor Plan



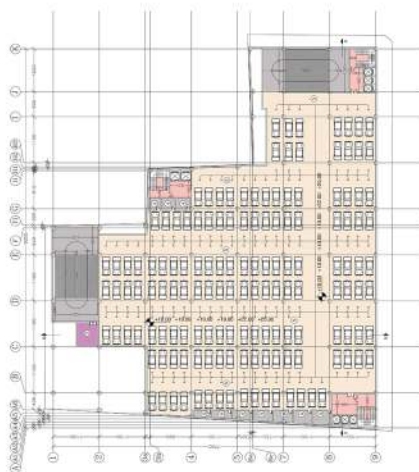
Shaghayegh Parking & Commercial Complex



Second Alternative



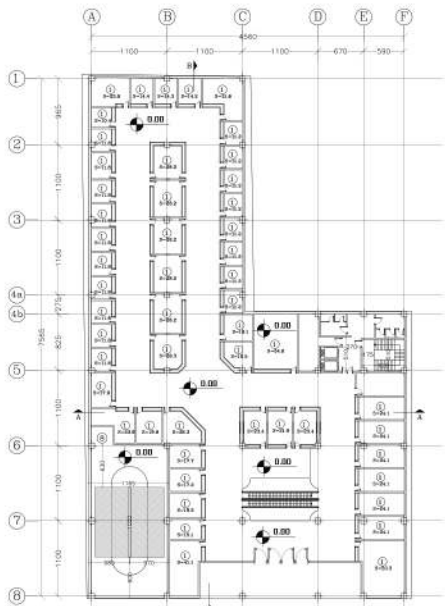
2nd - 7th Floor Plan



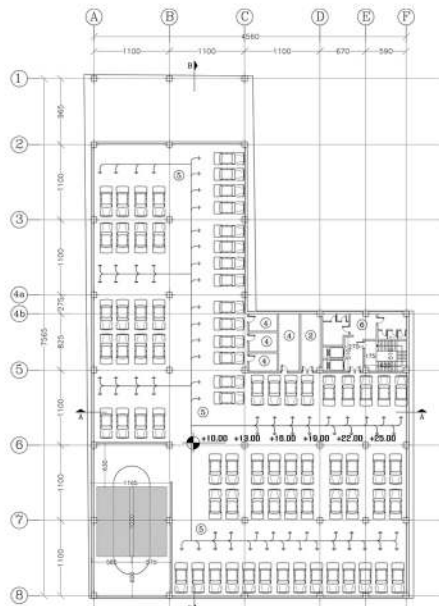
8th Floor Plan



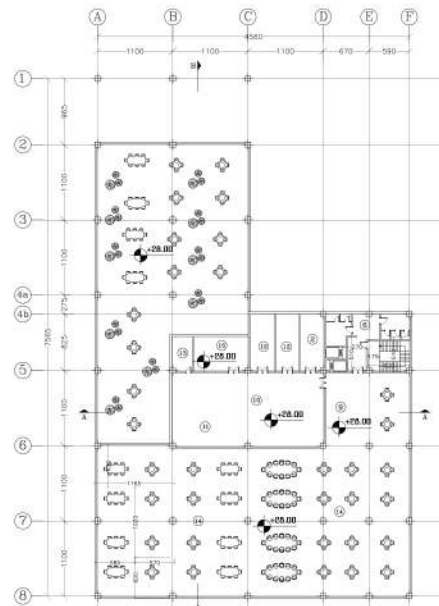
Rose Parking & Commercial Complex



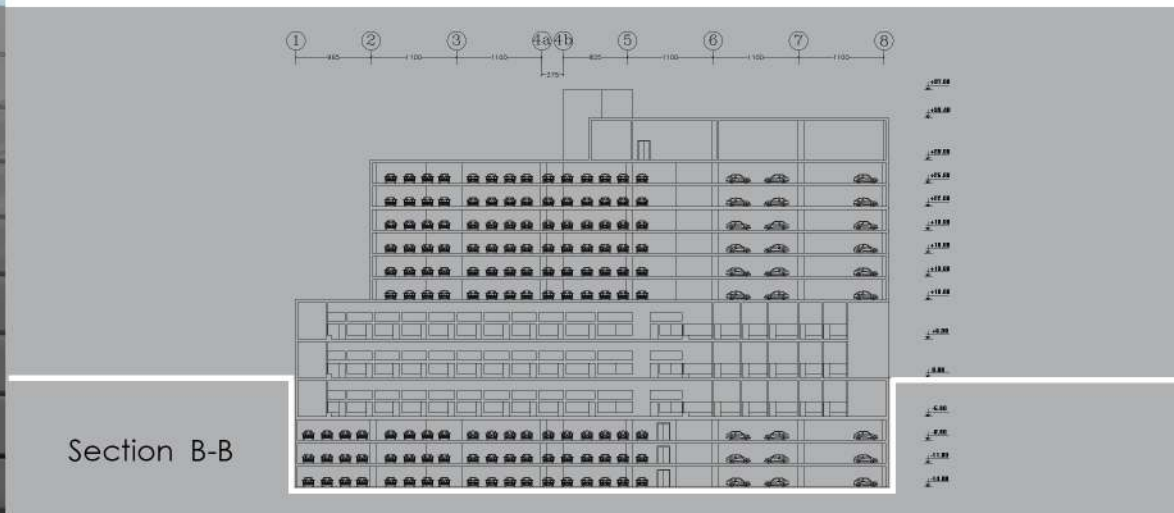
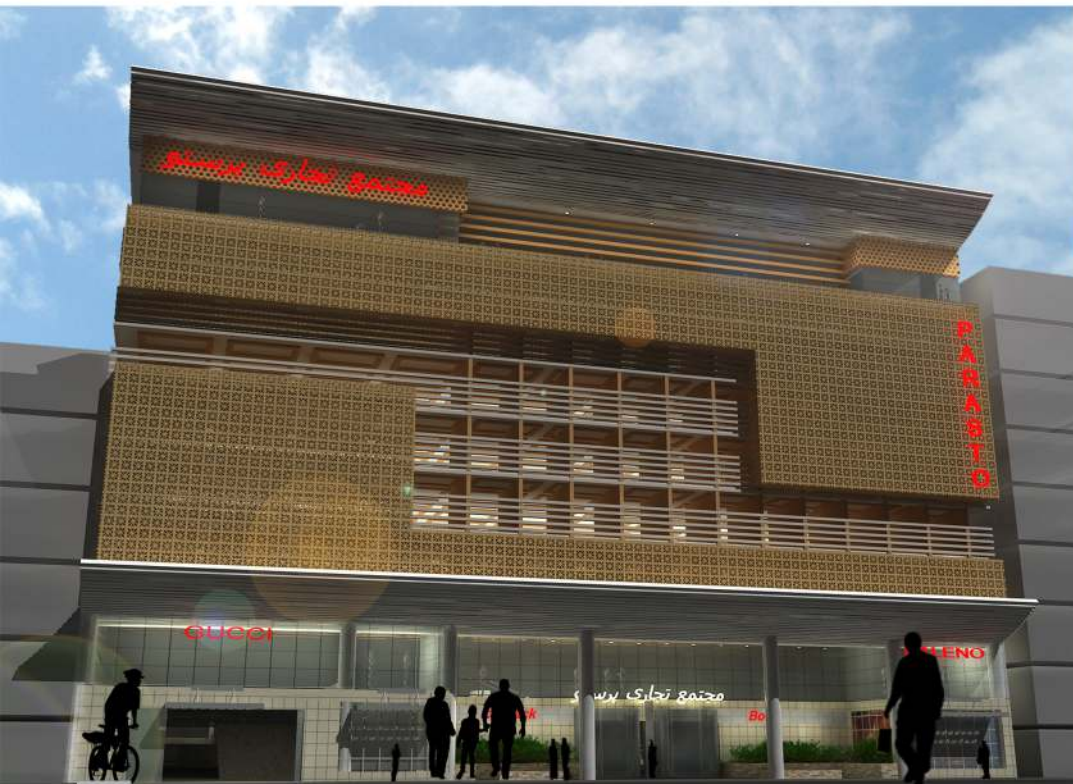
Ground Floor Plan



2nd - 7th Floor Plan



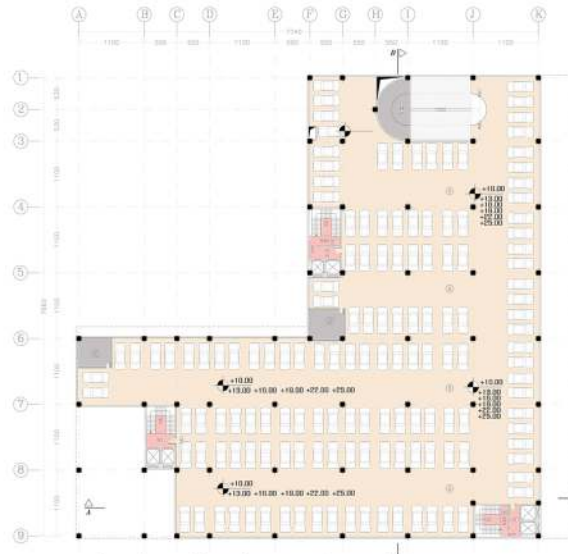
8th Floor Plan



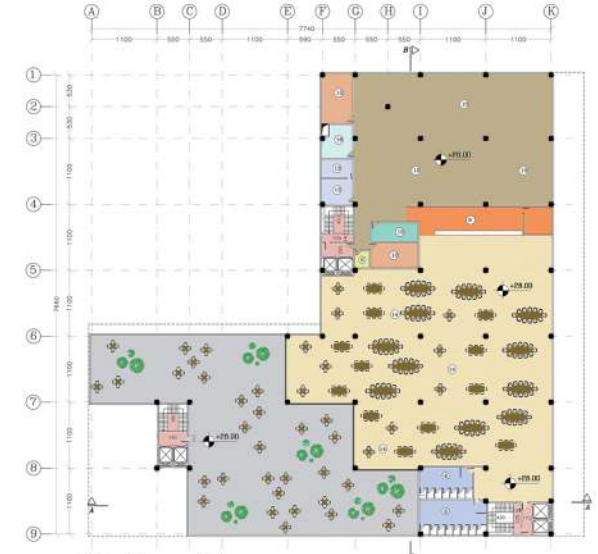
Section B-B



Ground Floor Plan



2nd - 7th Floor Plan



8th Floor Plan



Nilofar Parking & Commercial Complex

Sepehr Office & Commercial Building

Date:2014
Area:19700 Sqm

Baharan Office Building

Date:2011
Area:2500 Sqm

Armaghan Office Building

Date:2006
Area:3800 Sqm

Bozorgmehr Office & Commercial Building

Date:2006
Area:12700 Sqm



Office



Underground Floor Plan



Ground Floor Plan

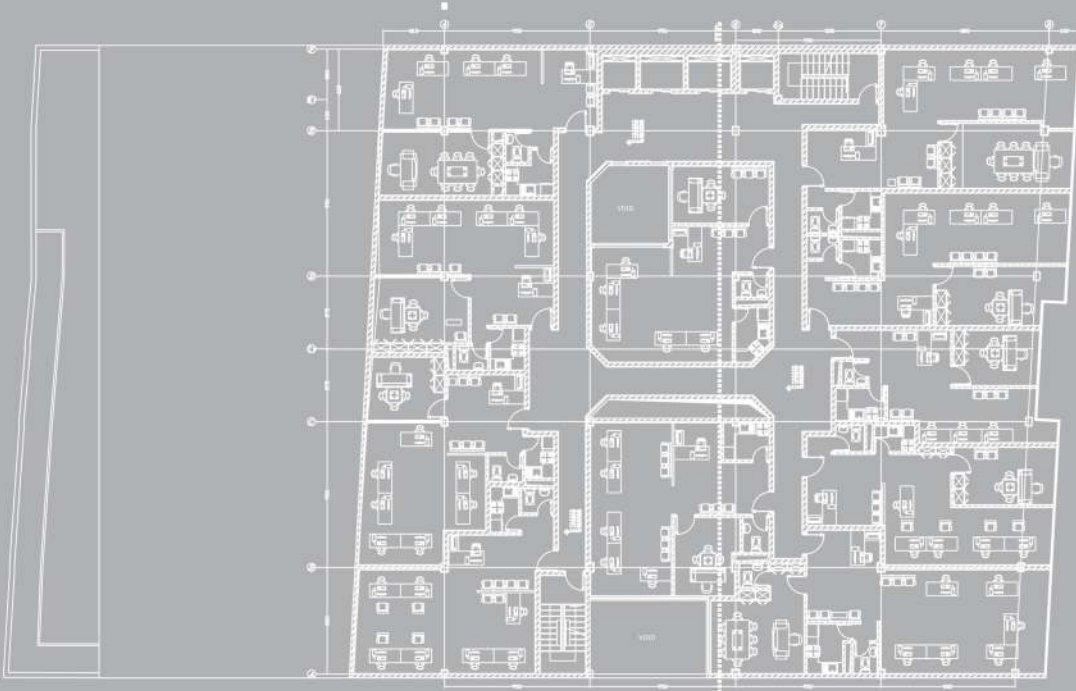


First Floor Plan

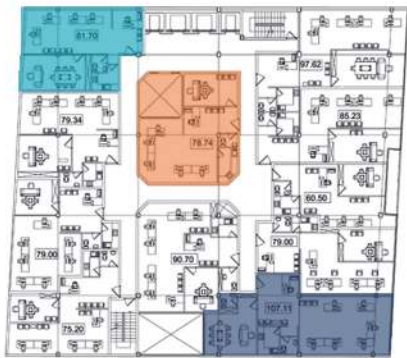
- 14-20 sqm
- 20-40 sqm
- 40-60 sqm
- 60-70 sqm
- 70-100 sqm
- 100-150 sqm

Alternatives

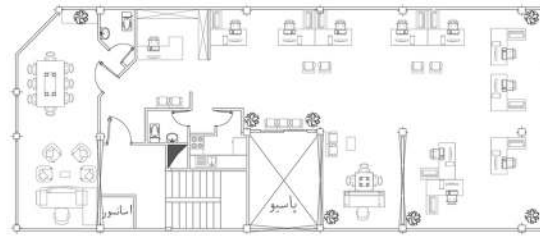




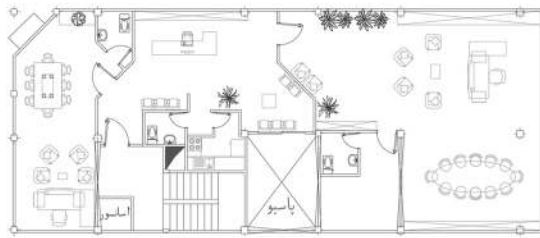
Typical Office Plan



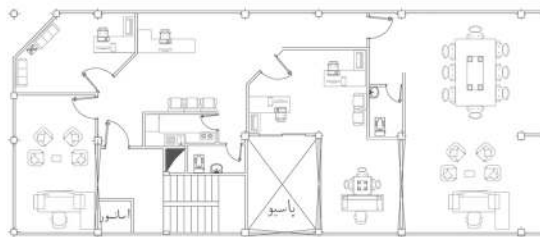
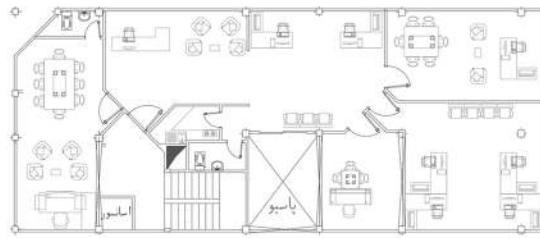
Natural Light in Offices



Ground Floor Plan



1st - 5th Floor Plan



Offices Floor Plan Alternatives

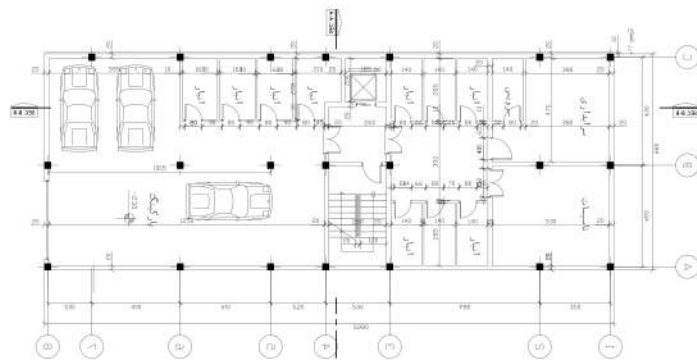


Baharan Office Building

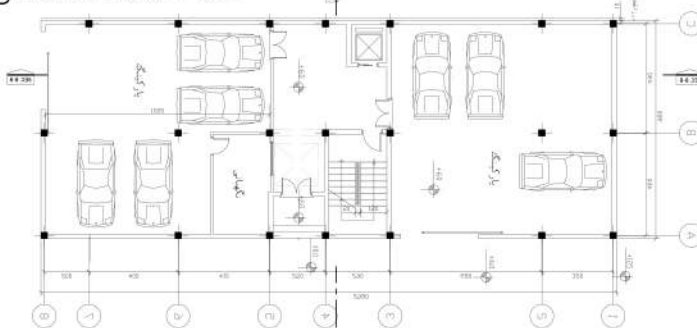




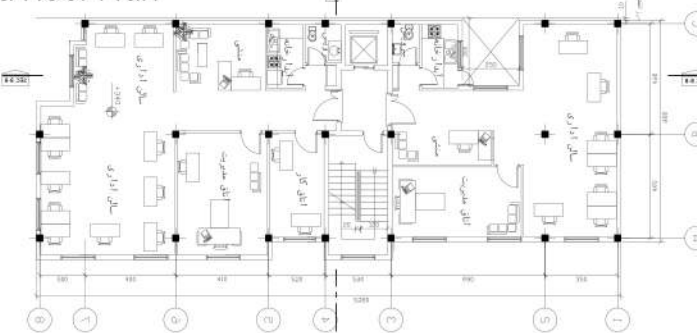
Baharan Office Building



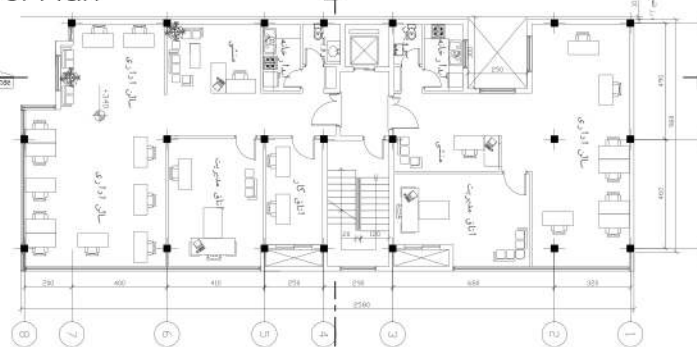
Underground Floor Plan



Ground Floor Plan



First Floor Plan



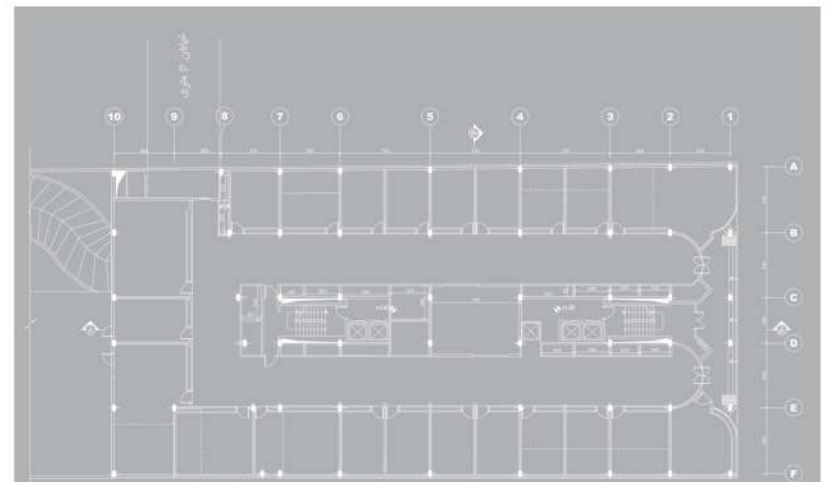
2nd - 5th Floor Plan



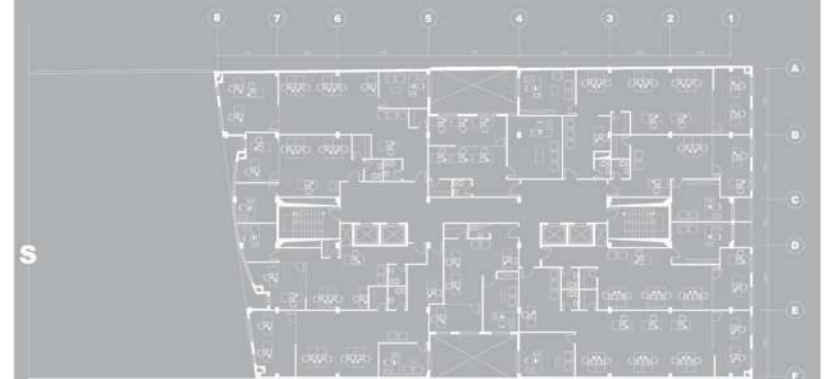
Armaghan Office Building



Bozorgmehr Official & Commercial Complex



Ground Floor Plan



First Floor Plan

Arghavan Residential Complex

Date:2012
Area:2800 Sqm



Mohammad Shahr Villa

Date:2011
Area:700 Sqm



Kelardasht Villa

Date:2010
Area:600 Sqm



Bukan Residential Complex

Date:2010
Area:3800 Sqm

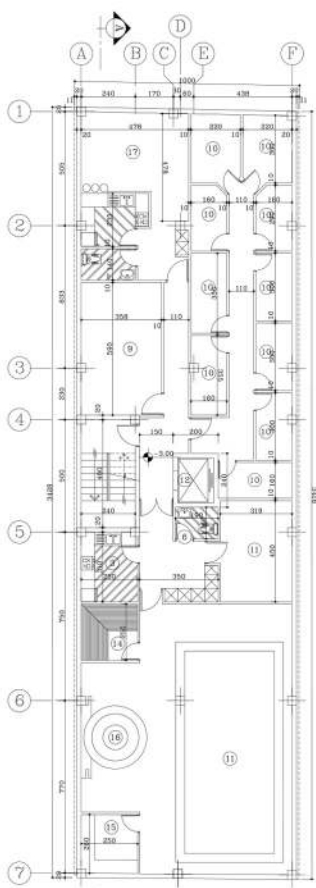


Zafaraniyh Residential Complex

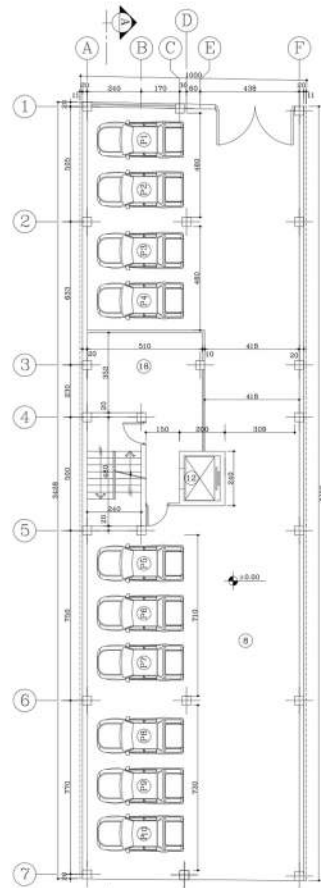
Date:2009
Area:8500 Sqm



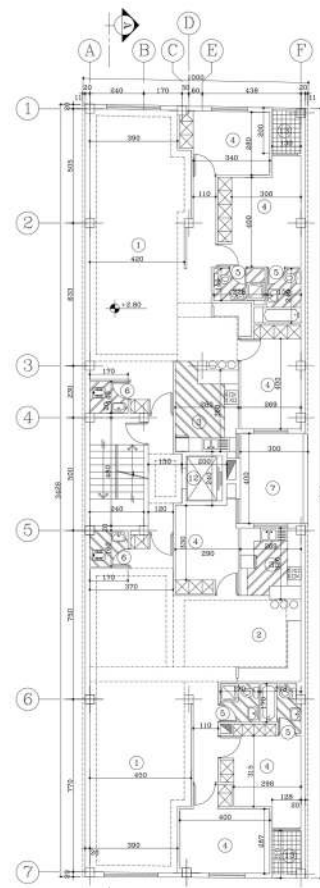
Residential



Underground Floor Plan



ground Floor Plan



First Floor Plan



Arghavan Residential Complex



Pool



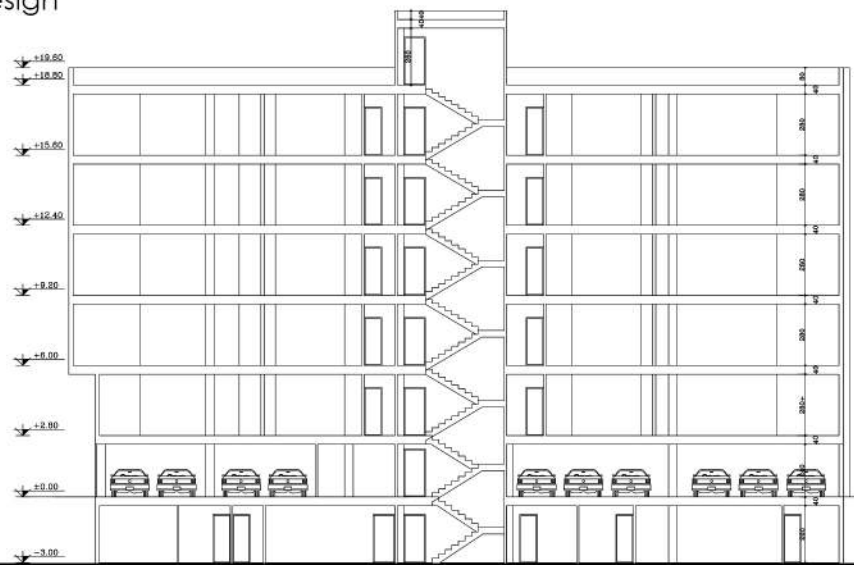
Lobby



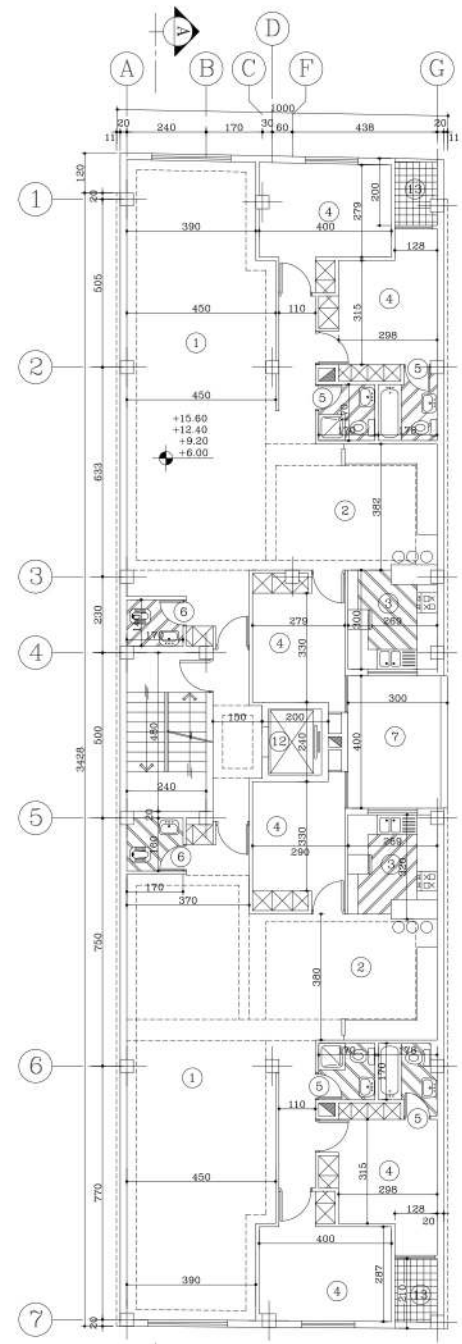
Interior Design



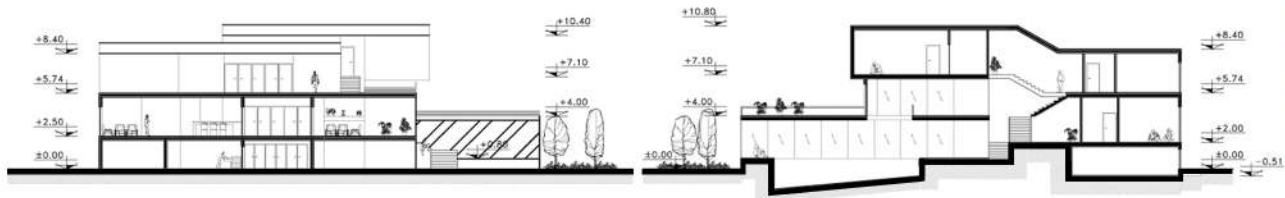
Units Interior Design



Section A-A



2nd - 5th Floor Plan



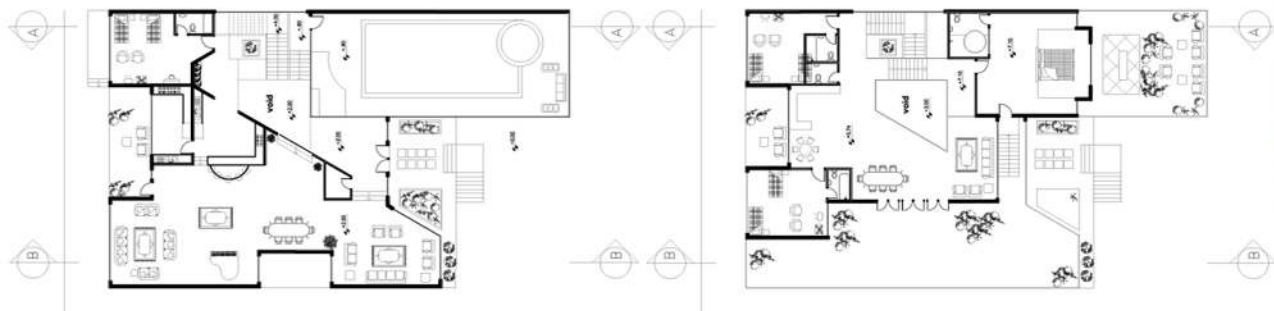
Section B-B

Section A-A



Ground Floor Plan

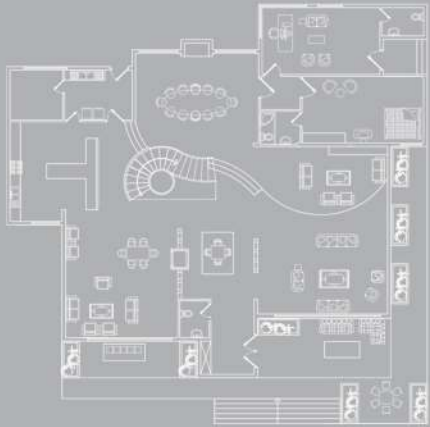
First Floor Plan



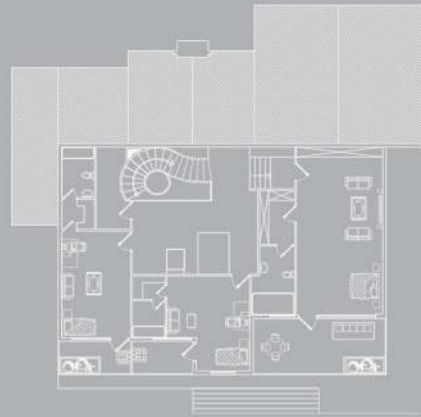
Mohammad Shahr Villa



Design Process Alternatives



Ground Floor Plan



First Floor Plan

